

as determined by the Electoral District Commission  
pursuant to the Electoral Districts Act 1922  
and the Electoral Districts Act 1995  
September 2013



Further information, including copies of this map, may be obtained at www.elections.nsw.gov.au

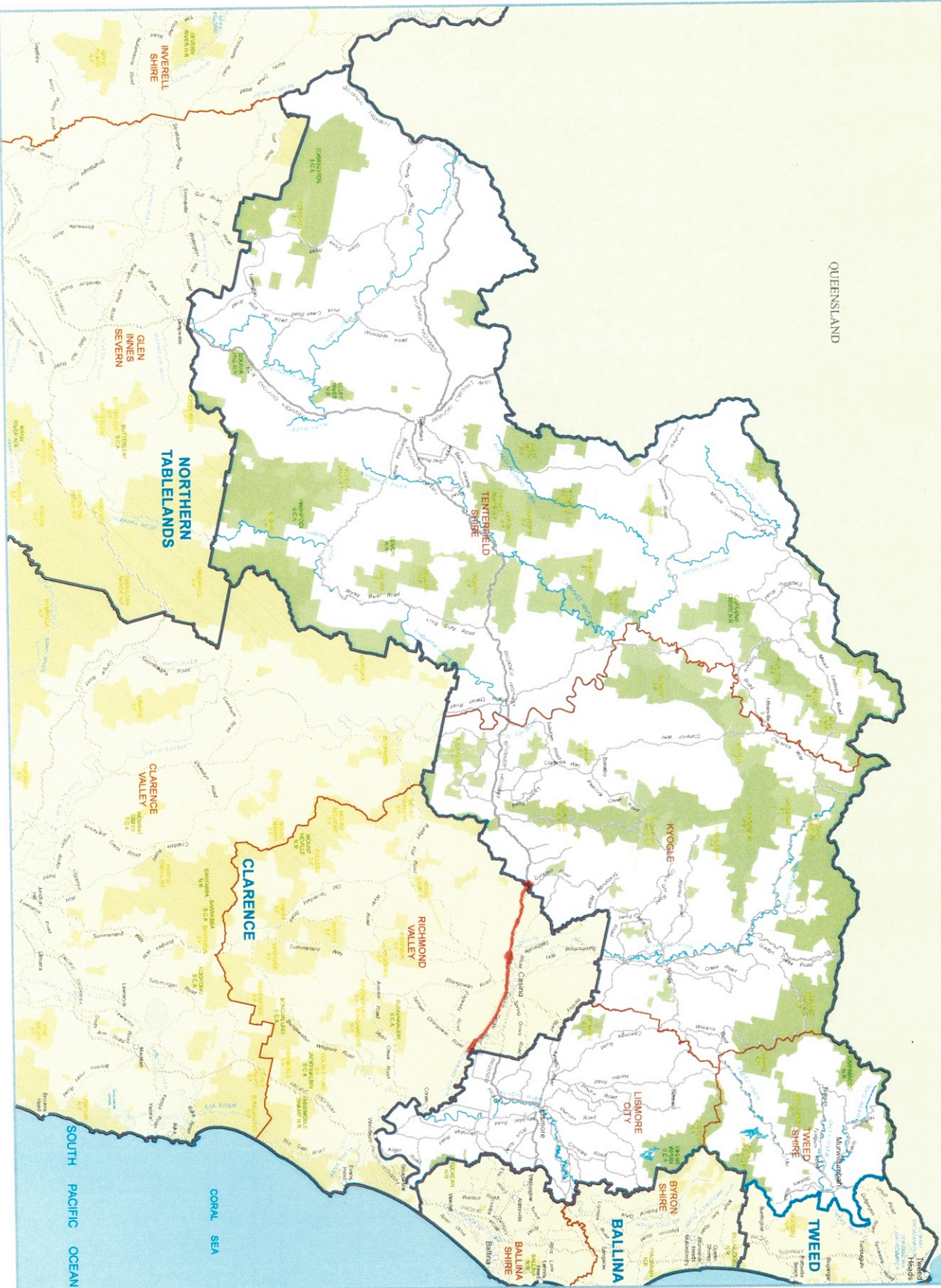
**SOUTHERN  
BOUNDARY  
ADJUSTMENT  
HIGHLIGHTED IN  
RED**

2013 Redistribution Electoral District  
of LISMORE  
(Redrawn from the State Electoral Boundaries 2013)

Local Government Area  
names and boundaries  
(as at 1 June 2013)



© Land and Property Information 2014  
© NSW Electoral Commission 2013  
Disclaimer: This map has been generated by various sources and is provided for information only. It is not intended to be used as a legal document. The Commission is not responsible for any errors or omissions, or for any consequences arising from the use of the information in this map. The Commission is not liable for any loss or damage, or for any delay, arising from the use of this map. You may need to refer to other sources to confirm the information in this map.



LISMORE

LISMORE