

Figure 2.50: Suggested Castle Hill

“Castle Hill” is the most natural name for this district, though there is a lack of continuity between the existing Castle Hill and this one. The suggested Kellyville district is really the successor the existing Castle Hill (with Kellyville taking around 40,000 electors from the existing Castle Hill). However, I would also point out that “Castle Hill” was a tenuous name for the existing district, and had little overlap with the pre-2015 Castle Hill.

## 2.11 Central Coast

With population growth in the Central Coast closely following the state trend, very few changes are needed here. I cannot find a way to improve upon the existing configuration. Gosford and Terrigal can remain unchanged. A couple thousand voters can be transferred from Wyong to The Entrance by following Ourimbah Creek and the boundary between Chittaway Bay and Berkeley Vale SSCs.



Figure 2.51: Suggested The Entrance

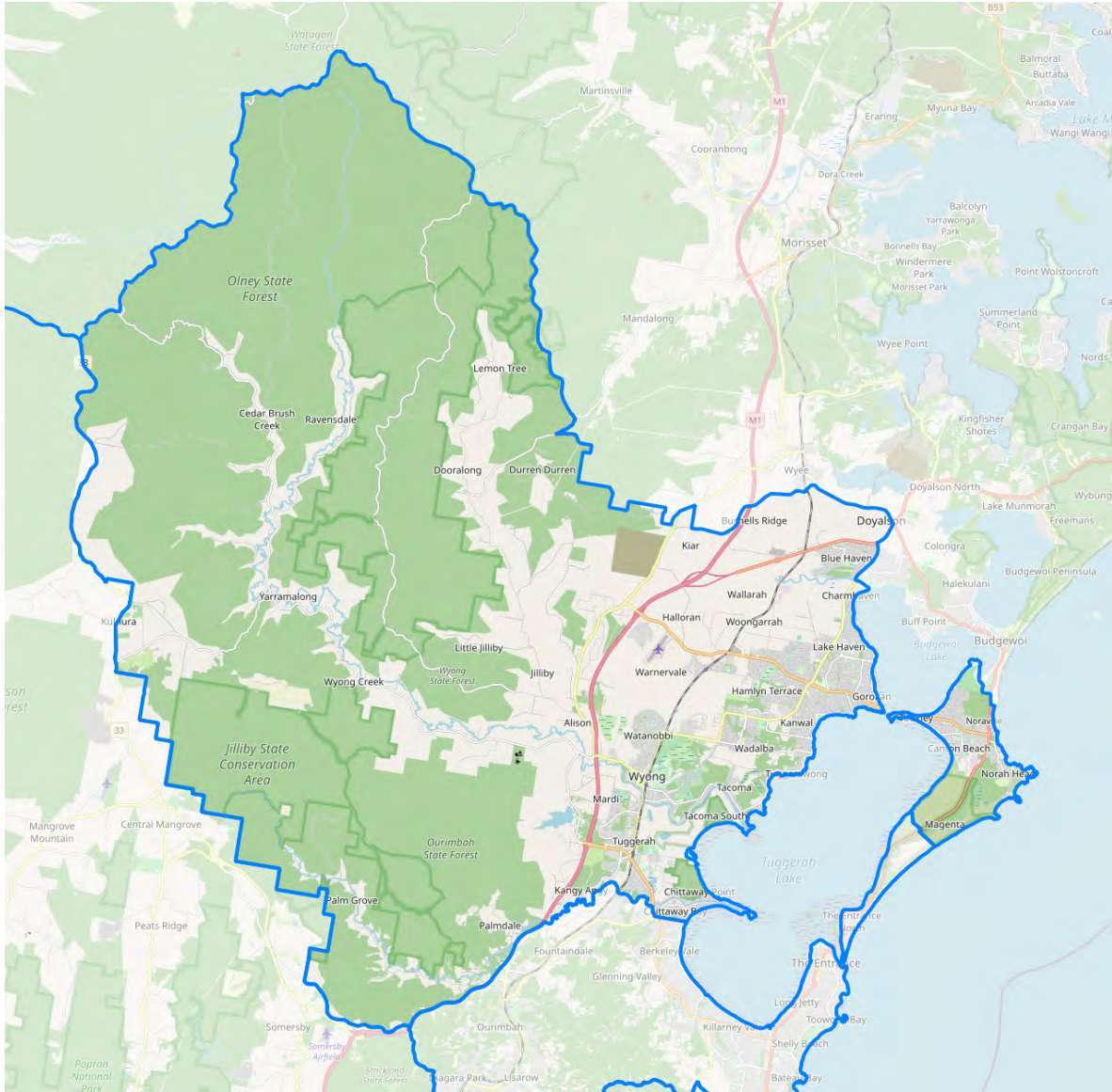


Figure 2.52: Suggested Wyong

### 3. Alternative

I also want to explore an alternative for Northern and North-West Sydney that the Panel may want to consider. This alternative is more radical, but it addresses a few potentially objectionable features of my preferred suggestion.

<b>Sec.</b>	<b>Districts</b>
3.1	Baulkham Hills, Dundas ( <i>new</i> ), Dural ( <i>new</i> ), Epping, Hornsby, Ku-ring-gai, Lane Cove, North Shore, Parramatta ( <i>absorbing Seven Hills</i> ), Rouse Hill ( <i>replacing Castle Hill</i> ), Ryde, Willoughby ( <i>absorbing Davidson</i> ).
3.2	Blacktown, Mount Druitt, Riverstone.

Table 3.1: Overview of alternative districts

### 3.1 Northern Sydney, Hills, and Parramatta

The starting point for this alternative is Hornsby. Instead of having Hornsby divert into Ku-ring-gai LGA around Hornsby SSC, Hornsby instead unites the entire corridor from Berowra to Pennant Hills. These are very strong boundaries – Berowra Creek in the west, and the LGA boundary in the east.

Ku-ring-gai district can now unite all Ku-ring-gai suburbs as far south as Gordon, which is also ideal.

Willoughby district must combine the remainder of Ku-ring-gai LGA with the Killarney Heights area in Northern Beaches LGA, along with parts of Willoughby LGA. As far as I can find, the best boundaries can be obtained by placing all of Chatswood east of the North Shore line and everything east of and including Willoughby SSC into this district. While the east side of Artarmon could be included in this district, it will leave Lane Cove around 5,000 electors short of a quota unless we are willing to split Hunters Hill LGA.

Willoughby SSC is now in the corner of this district, so the panel may want to consider the name “Middle Harbour”, which has been used in two incarnations in the past.

Lane Cove and North Shore are among the sketchier districts in this alternative. By leaving Lane Cove slightly below quota and Ryde slightly above, we can fully respect the Lane Cove River. But here must choose between Lane Cove having a panhandle extending towards Cammeray, or realigning the boundary between Lane Cove and North Shore to follow the Pacific Highway. This means that North Shore gains all of Cremorne, Cammeray, Crows Nest, and Naremburn, while ceding Milson Point, Lavender Bay, McMahons Point, Waverton, and Wollstonecraft. I worry that residents in these areas might receive these changes negatively.

Having compacted to the east, the Panel may want to consider restoring the name “Mosman” should these boundaries be adopted.

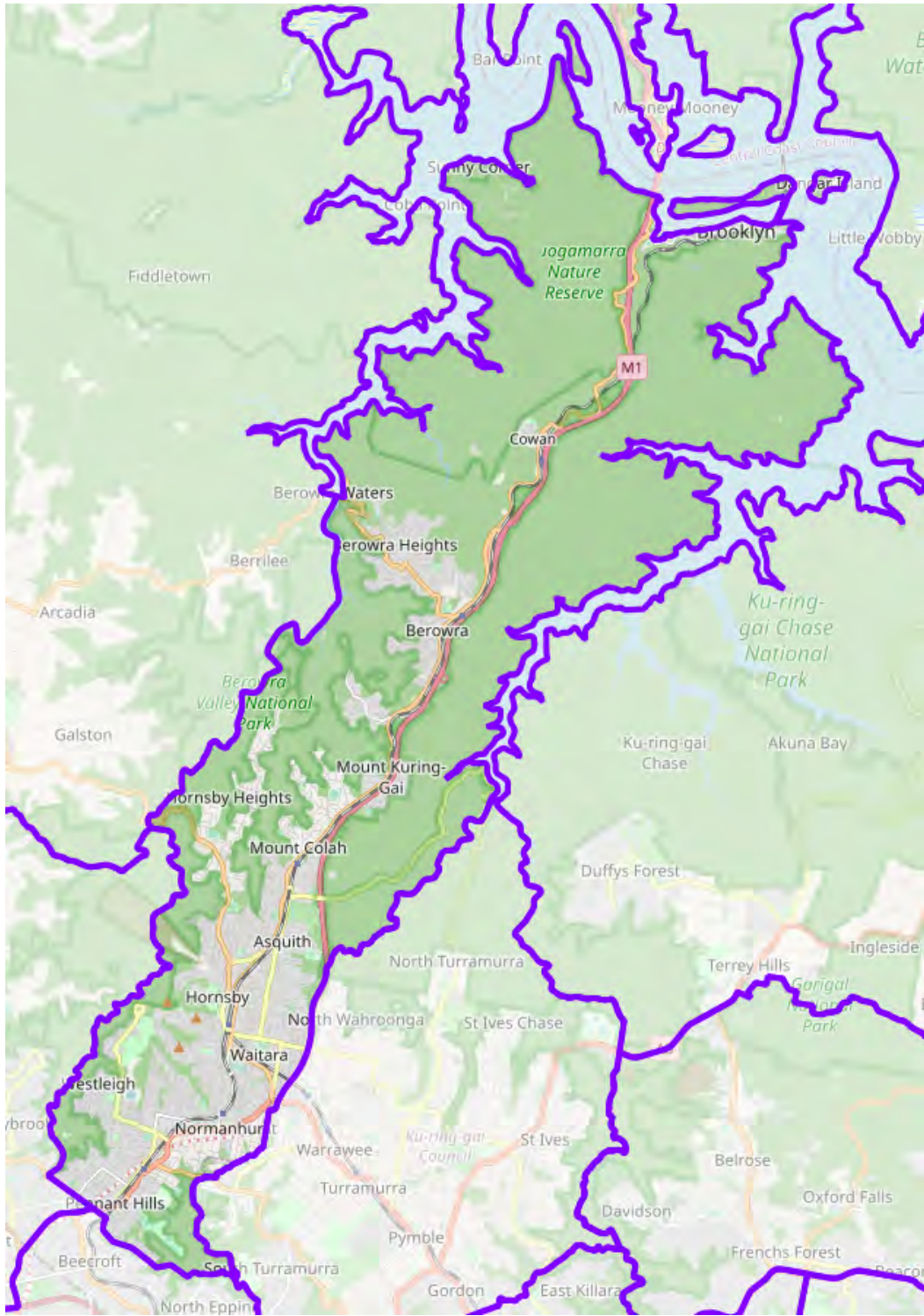


Figure 3.1: Alternative Hornsby

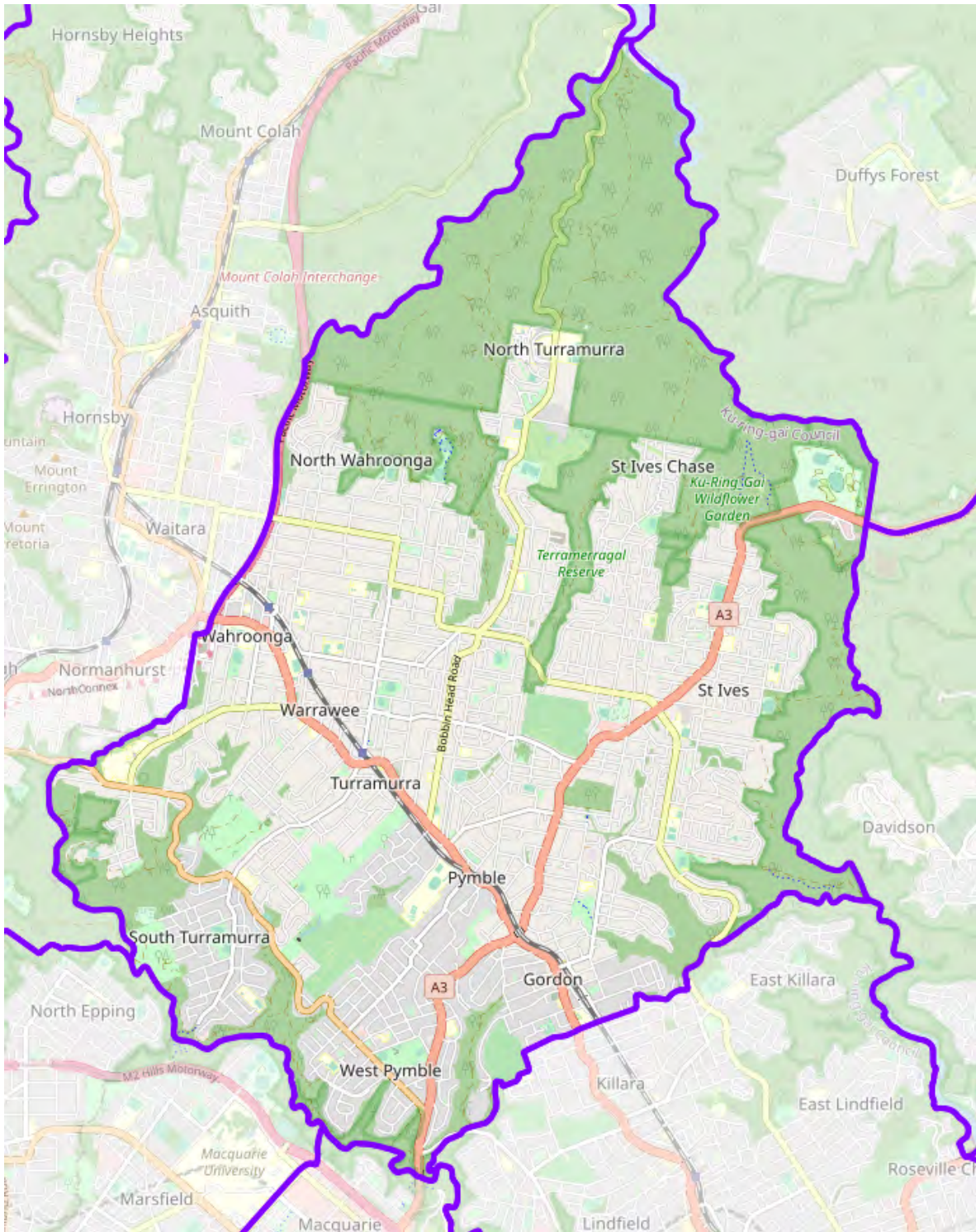


Figure 3.2: Alternative Ku-ring-gai



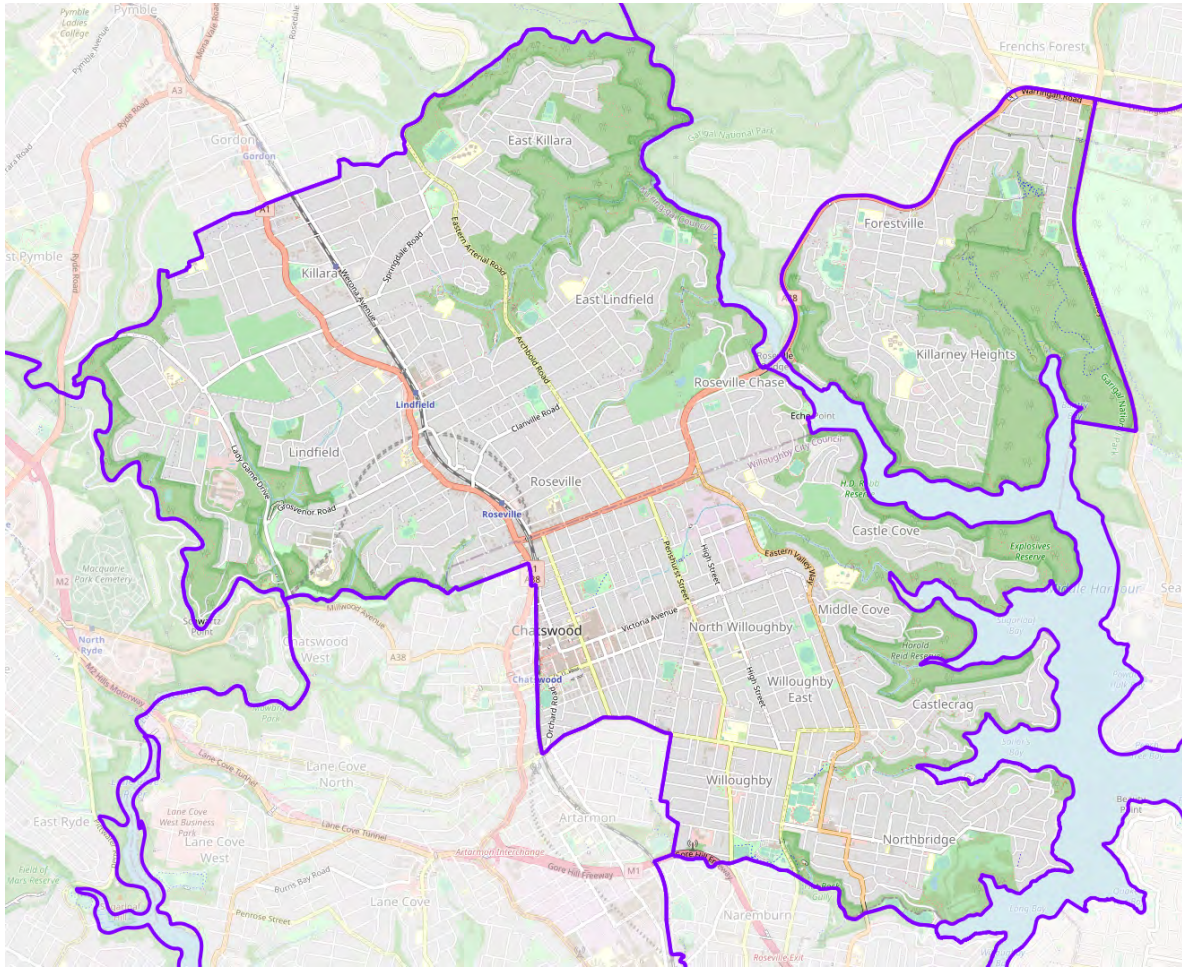


Figure 3.3: Alternative Willoughby

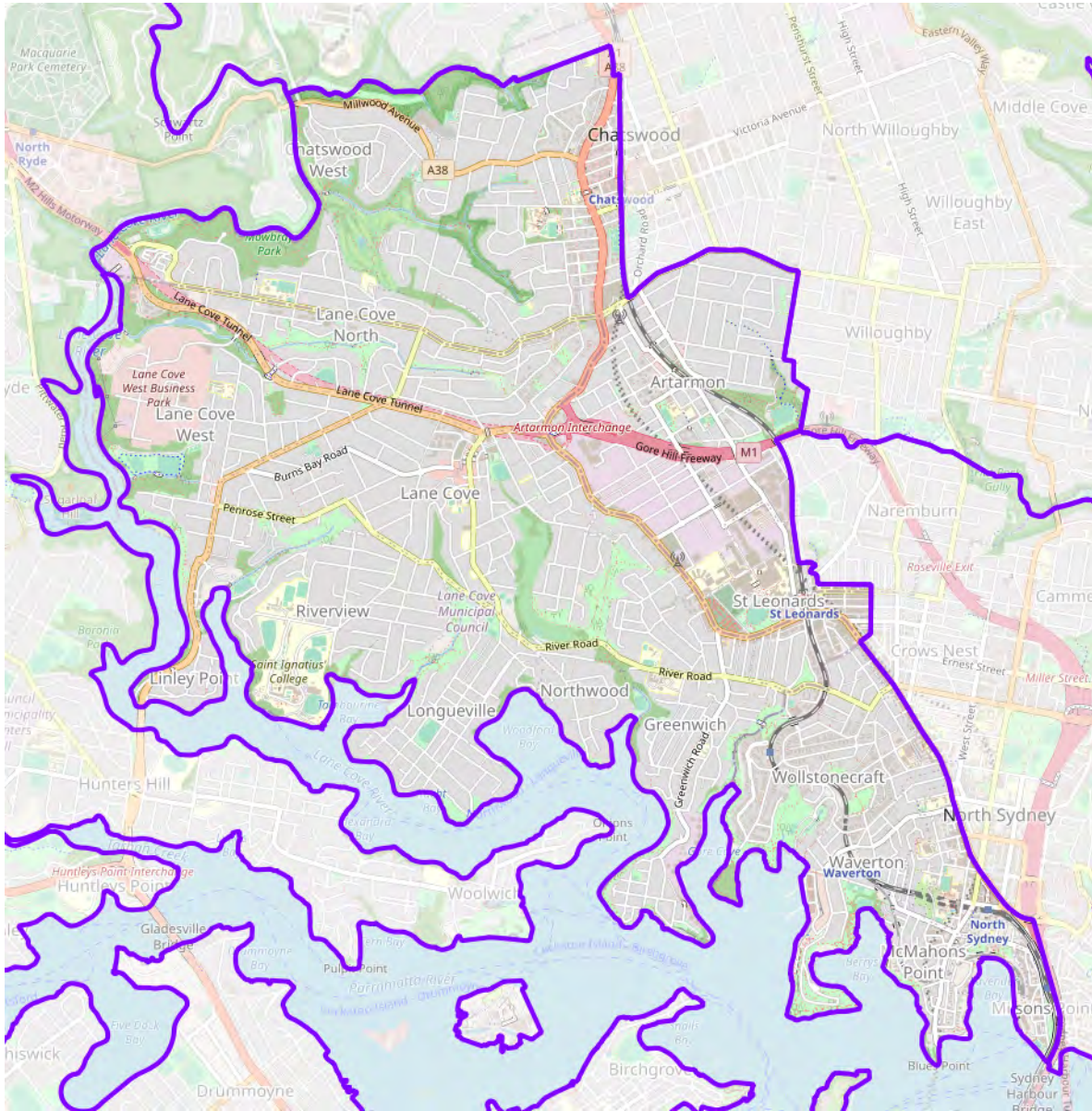


Figure 3.4: Alternative Lane Cove

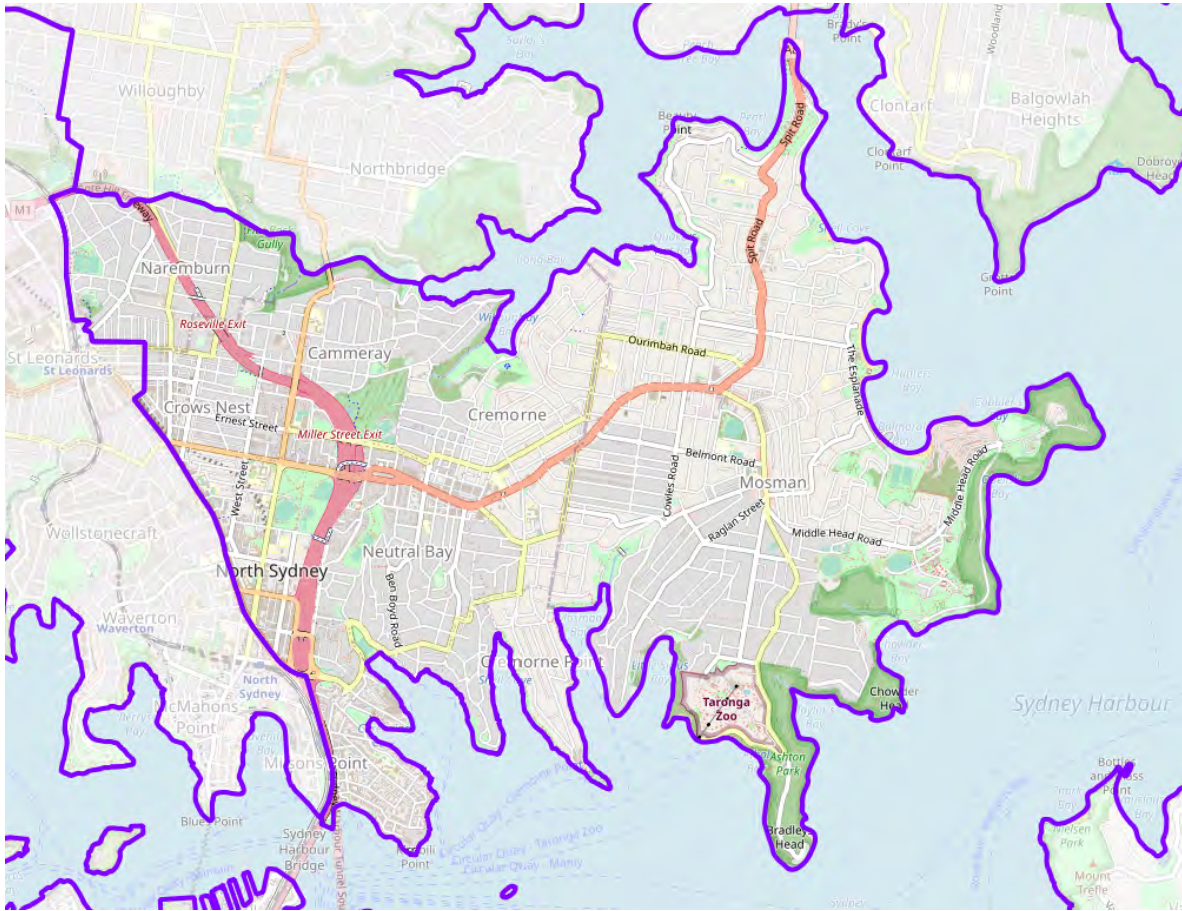


Figure 3.5: Alternative North Shore

With Lane Cove no longer crossing the Lane Cove River, Ryde must move east. The best western boundary I can find is to follow Herring Road from the north, then approximately follow the boundaries of Denistone East and Denistone SSCs, then follow the Northern Line south, with a minor detour close to the Parramatta River to ensure that the medium-density parts of Meadowbank are united. These boundaries are very similar to those of the “Gladesville” district in the 1990s.

The resulting Epping district is one that is very much centred on Epping SSC, straddling Hornsby, Parramatta, and Ryde LGAs. This district can unite all of Eastwood, extend as far north as Beecroft, and largely follow Pennant Hills Road and Marsden Road in the west, though there needs to be a tab from Pennant Hills Road out to Oakes Road and Jenkins Road to bring this district close to a quota. Uniting the remainder of Ryde LGA within this district is a possibility, but may have some unpleasant consequences on districts to the west.

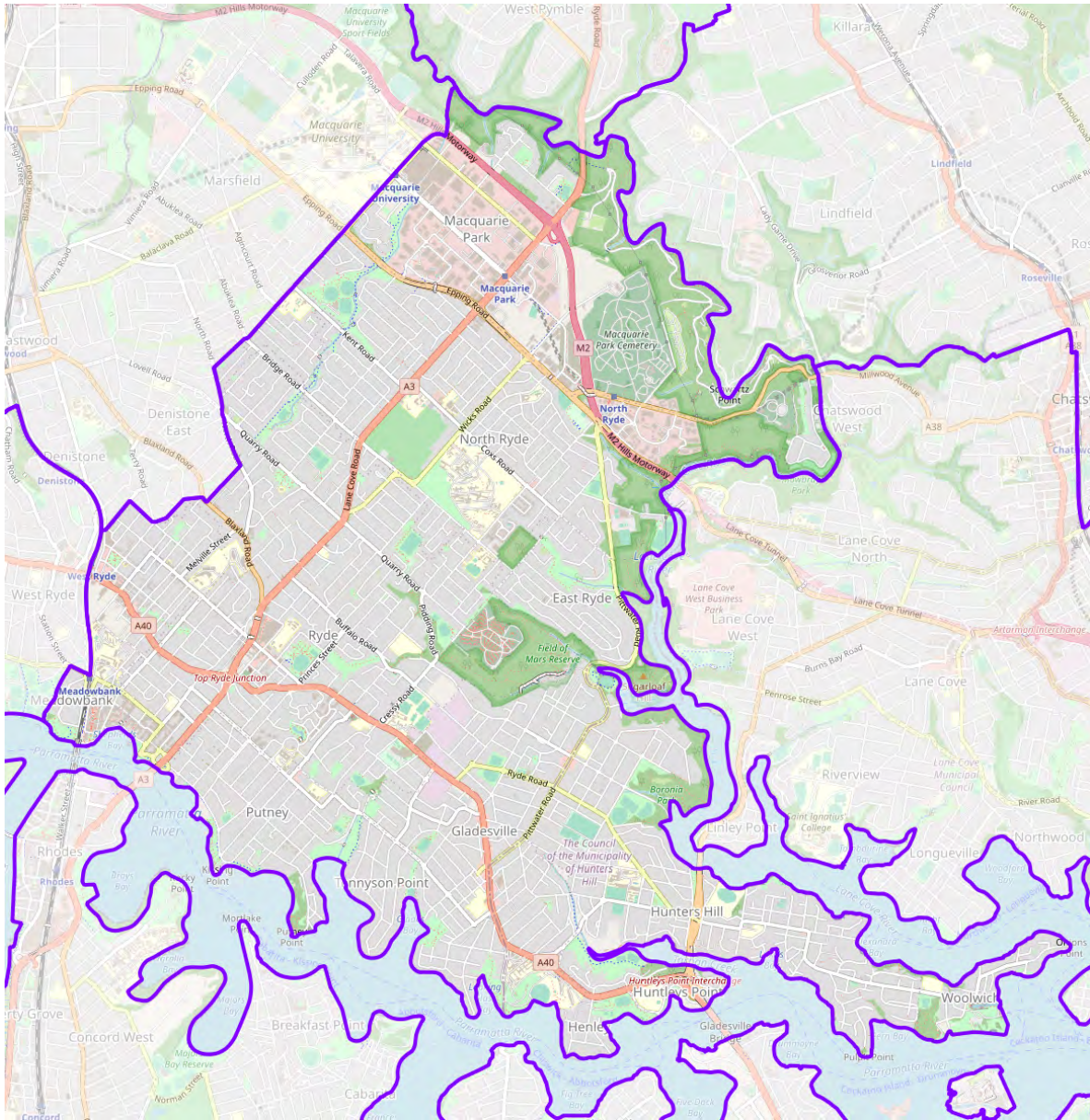


Figure 3.6: Alternative Ryde

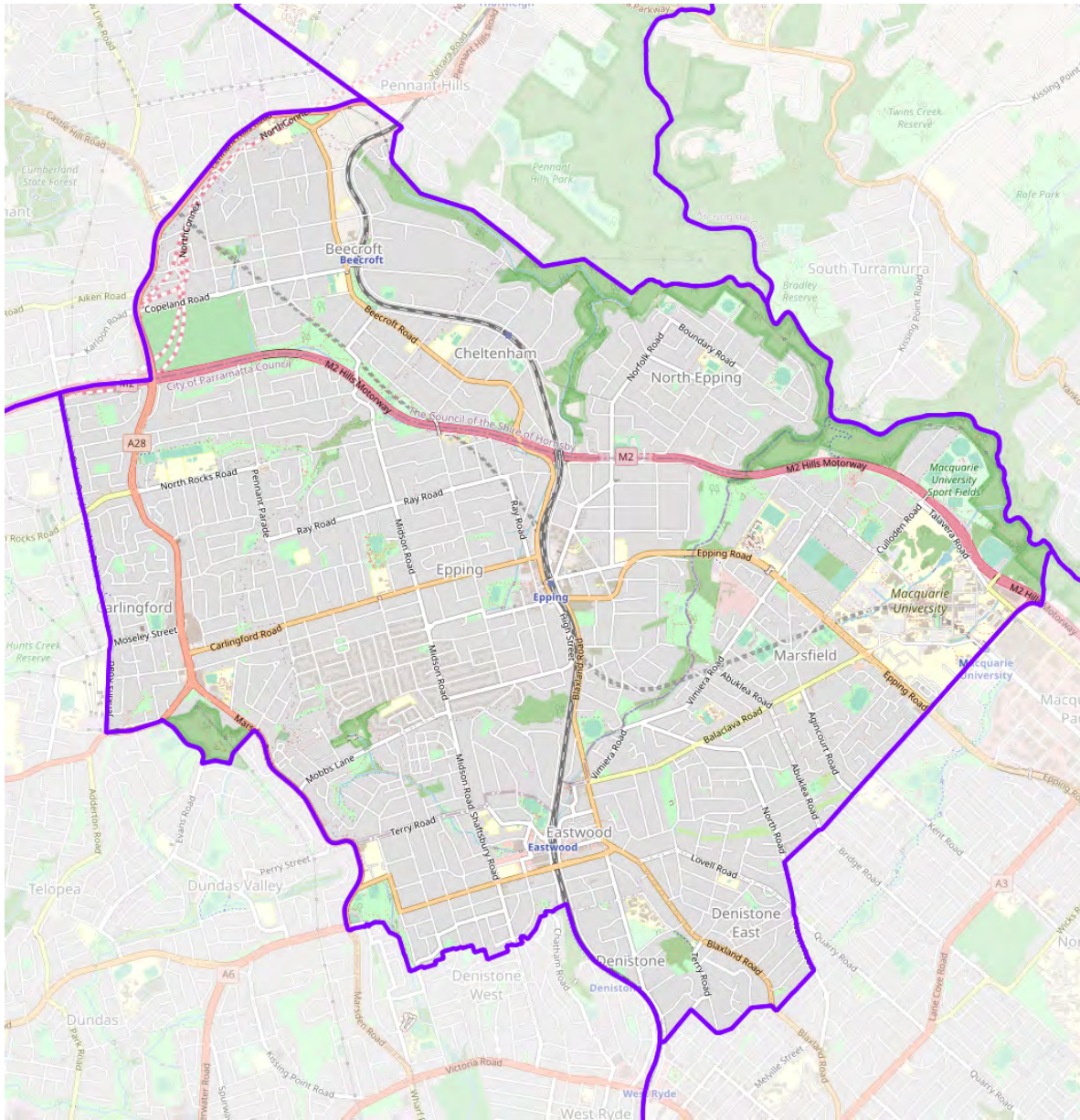


Figure 3.7: Alternative Epping

The district to the north can almost perfectly unite two of the North-West subregions I discussed – the 1980s Hills/Hornsby suburbs (West Pennant Hills, Cherrybrook, Glenhaven, and the north of Castle Hill), and the semirural suburbs to the north. These boundaries are ideal. As a former resident of Cherrybrook, if I were submitting a single-district suggestion for the area around Cherrybrook, these are more or less the boundaries I would suggest. This district is left slightly below quota to counterbalance excesses in districts to the west which are constrained by the current enrolment rule. I suggest that this district be named “Dural”.

The two districts to the west of Epping are less than ideal and are a large part of the reason why this alternative is not my preferred proposal. The remaining parts of Parramatta and Ryde LGAs east of Darling Mills Creek and north of the Parramatta River contains around 62,500 electors, meaning a small portion of this area needs to be removed from the district in this area. There are a few approaches the Panel could take. The approach I have taken is to remove most of Parramatta SSC and parts of North Parramatta. Another idea is to transfer parts of North Rocks and/or Carlingford into Dural. I suggest that this district be named “Dundas”.

Another problem arises in relation to the boundaries of Kellyville and Riverstone, and the consequences these will have on nearby districts. Consider what happens to Baulkham Hills district if we use the boundaries for Kellyville and Riverstone in my preferred suggestion – it must either run from Castle Hill station in the north to Pendle Hill station in the south, or form an awkward U-shape around Bella Vista. Both of these configurations are undesirable, and much more so than the only other alternative here – that Kellyville district cross Old Windsor Road and Windsor Road. On these alternative boundaries, I am going to refer to this district as “Rouse Hill” instead of “Kellyville”.

While not ideal, I do not think this is all that bad, and certainly nowhere near as bad as placing Castle Hill and Pendle Hill in the same district. There is an argument to be made that there is actually a community of interest uniting both sides of Old Windsor Road and Windsor Road. When I lived in Stanhope Gardens, commuters on both sides would funnel onto the bus stops along these roads. The only difference now is that most of these commuters are now utilising the metro. Demographically, both sides are very similar – young families with high household incomes. The only significant difference is that the west side is somewhat more ethnically diverse. Moreover, the

newer parts of Kellyville around Memorial Avenue are about as ethnically diverse as Stanhope Gardens or Kellyville Ridge.

The clearest boundaries we can draw to have areas west of Old Windsor Road and Windsor Road in Rouse Hill district are to follow the Stanhope Parkway to the Second Ponds Creek, then follow the Second Ponds Creek north to Windsor Road. In the southeast of the district, there is now no need for Rouse Hill to extend into Bella Vista or Baulkham Hills. This allows the Baulkham Hills district to cleanly extend into Kings Langley and Glenwood without forming an ugly U-shape, and unites areas around Bella Vista station.

I originally considered placing the north of Bella Vista in Rouse Hill, and parts of Castle Hill north of the commercial area (near Showground station) in Baulkham Hills (in which case “Kellyville” is once again a better name). While I would argue that this would be acceptable, it certainly looks quite odd. Admittedly, I was a little tunnel-visioned by my desire to keep newer suburban areas united.

I am also a little annoyed that I had to concede to using Memorial Avenue as part of the boundary, which cuts through the new residential developments in the west of Kellyville. Actually, I am not sure whether these boundaries satisfy the current enrolment rule due to SA1 1155902 (centred on Memorial Avenue) containing over 4,000 electors, and it is difficult to discern from satellite imagery how electors may be distributed in this SA1. If not, the Panel will need to push the boundary between Rouse Hill and Baulkham Hills south, perhaps to Balmoral Road and Fairway Drive. The Panel should be aware that the suburb boundaries of Bella Vista and Kellyville have recently been modified.

With the suggested Greystanes district to the southwest, the Parramatta district needs to extend west from Camellia and then arc northwards to Winston Hills. These boundaries are a little awkward, but the district is reasonably well-connected, and the boundaries in the north of the district mostly respect LGA boundaries. Also on the plus side, we have managed to eliminate Seven Hills district. The placement of Camellia (a suburb with four electors on projected enrolment) in Dundas is mostly to prevent the south of district from becoming an ugly panhandle.

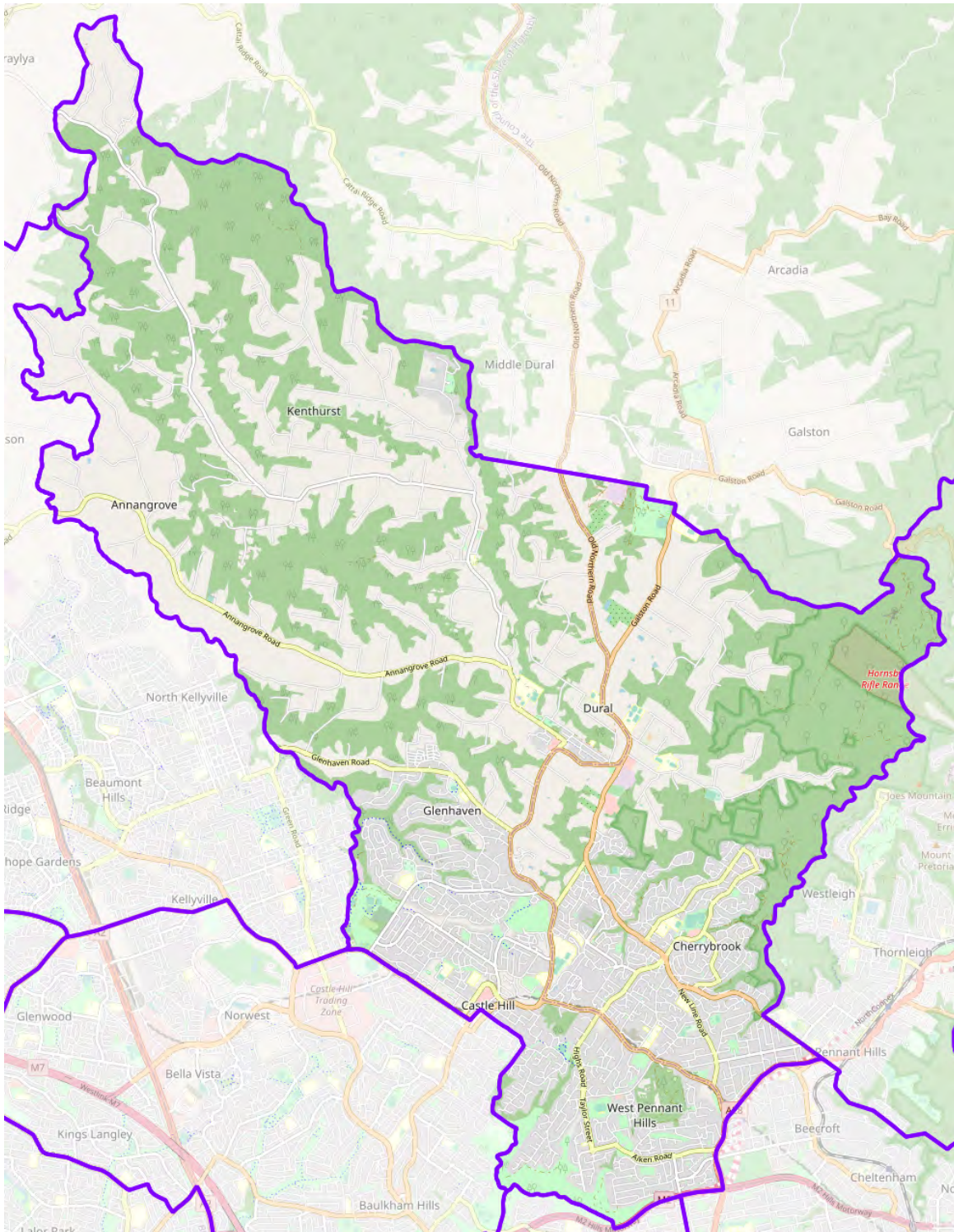


Figure 3.8: Alternative Dural



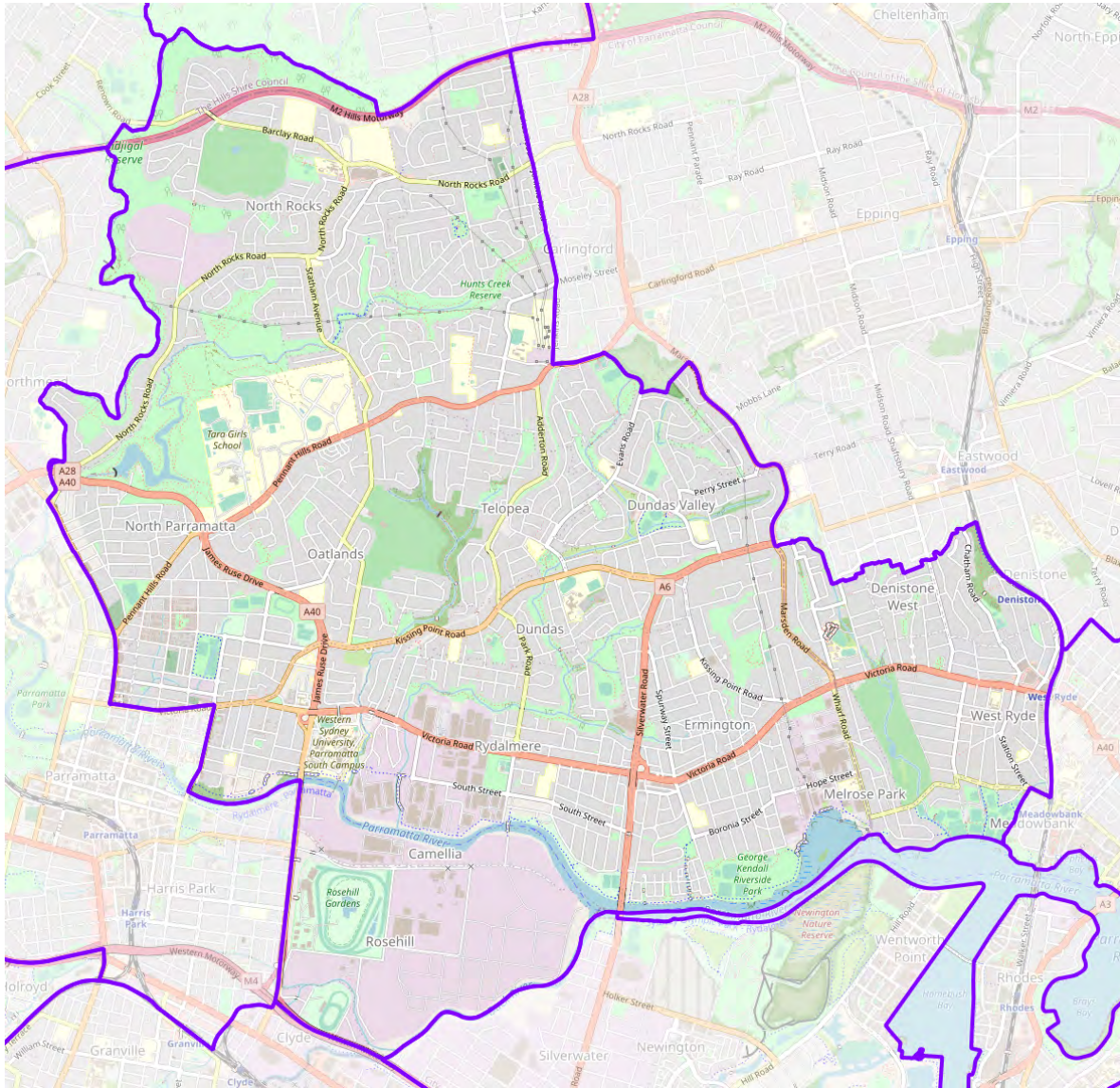


Figure 3.9: Alternative Dundas

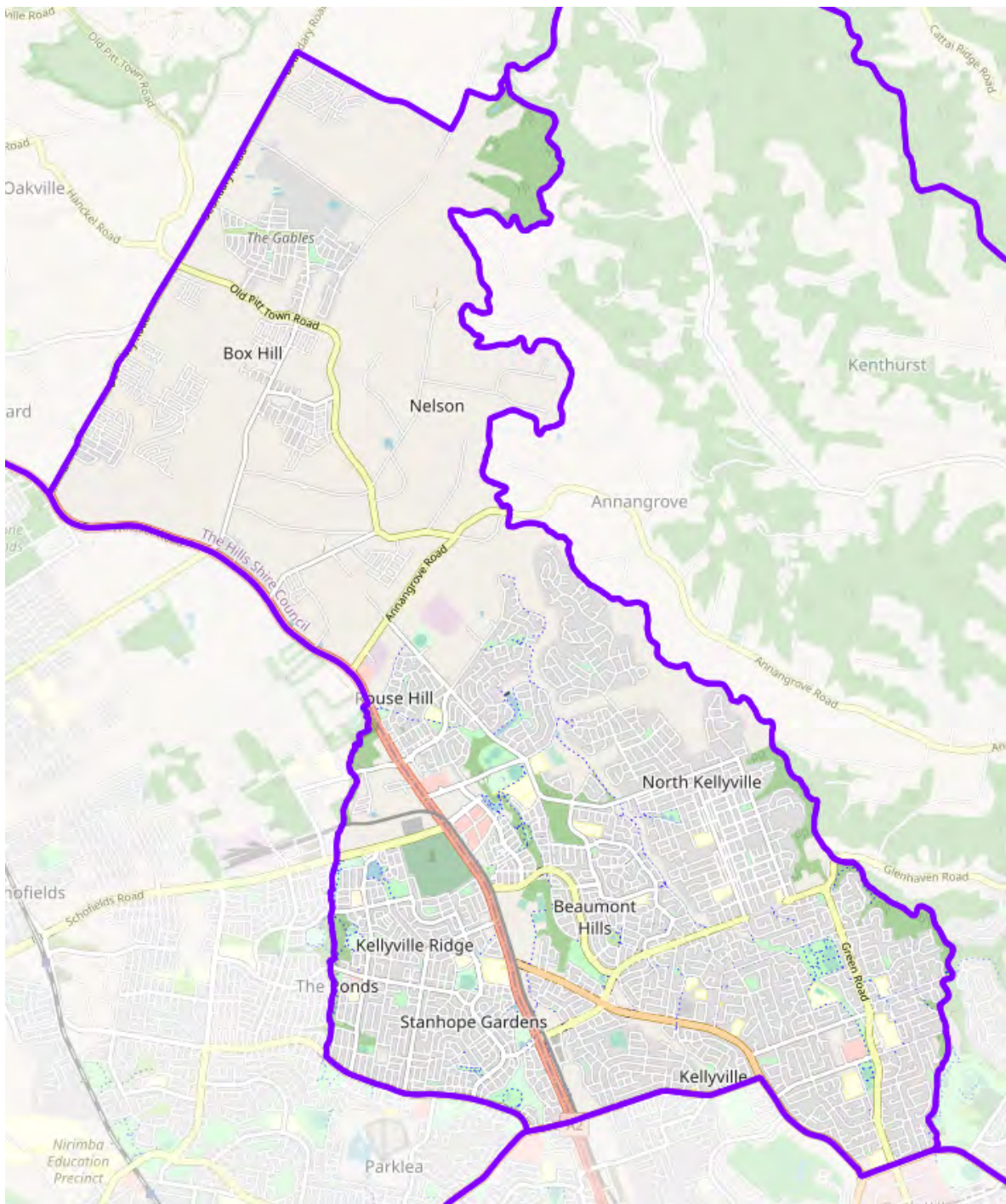


Figure 3.10: Alternative Rouse Hill

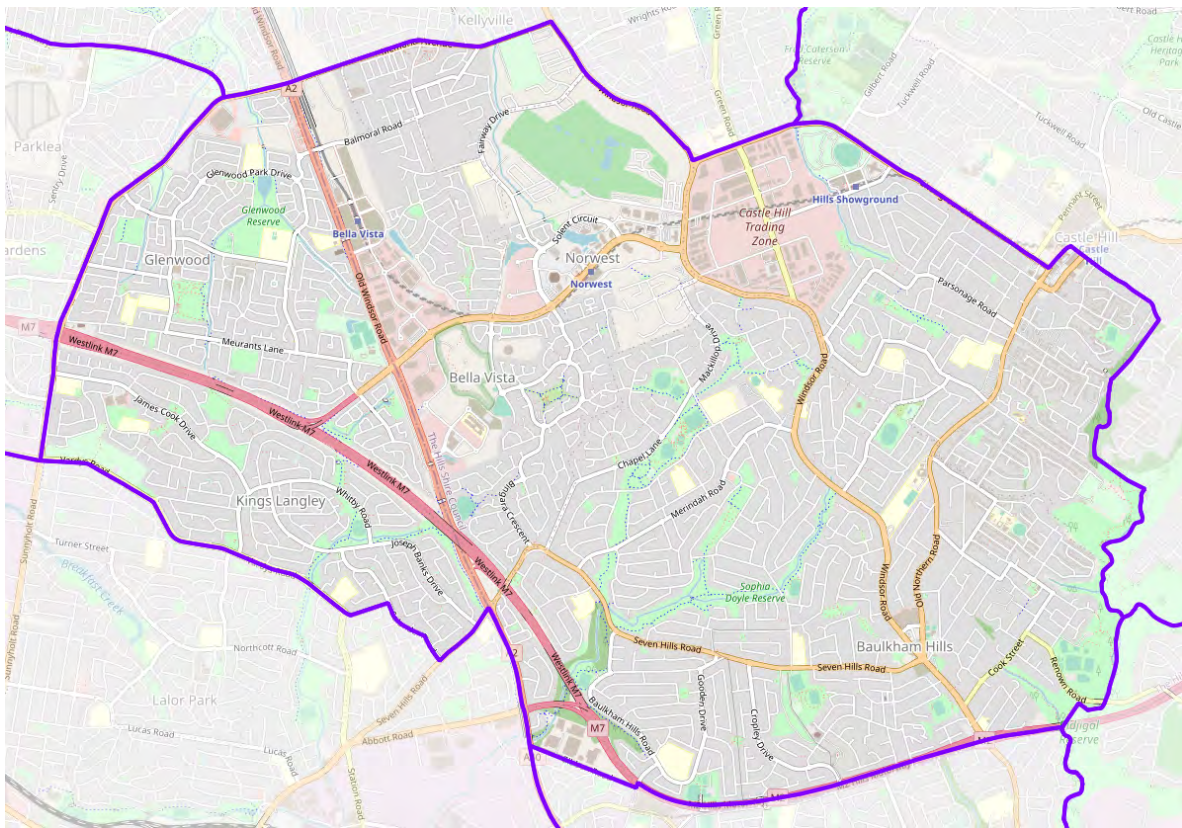


Figure 3.11: Alternative Baulkham Hills

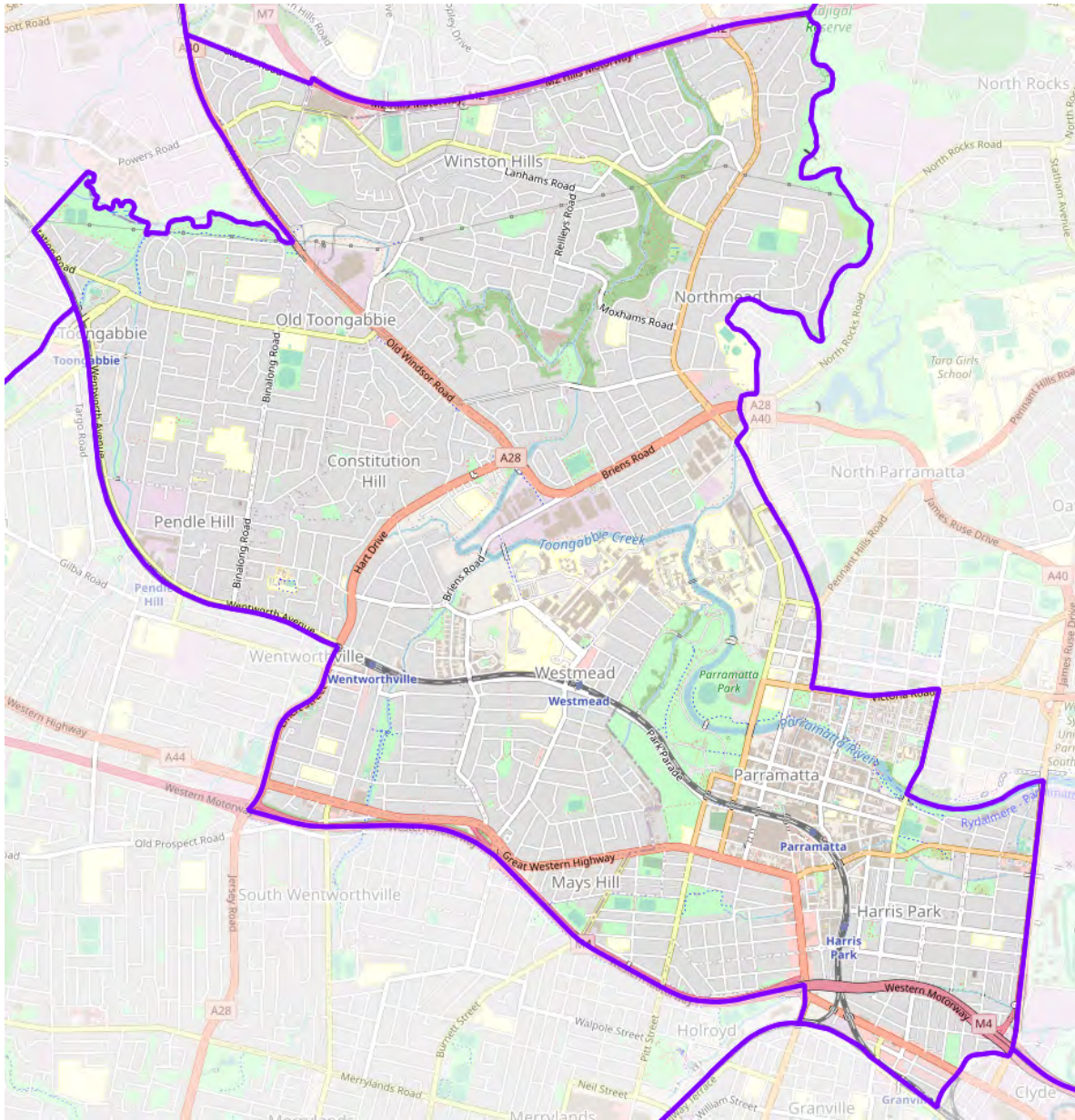


Figure 3.12: Alternative Parramatta

I acknowledge that it may be preferable to keep Galston (and suburbs to the north) in Hornsby district. This can be achieved by transferring the parts of Pennant Hills and Thornleigh SSCs south of the Comenarra Parkway and east of Pennant Hills Road to Epping. The flow-on effects are mostly minor, for example, the area south of Moseley Street could be transferred to Dundas, areas to the east of Harris Street to Parramatta, and part of Winston Hills to Baulkham Hills.

Attempting to propagate the inclusion of the Galston area through the North Shore instead will mean Ryde crossing the Lane Cove River, or a disparity between Ryde and Lane Cove districts of around 5% of a quota.

## 3.2 Blacktown

With Rouse Hill having gained a large part of Riverstone, Riverstone must expand south of the M7. The cleanest boundaries I can find involve transferring in Colebee, Kings Park, the remainder of Quakers Hill, and parts of Marayong, using Breakfast Road and Quakers Road as part of the boundary. The resulting district unites suburbs along the Richmond Line.

The effect this has on Mount Druitt compared to my preferred suggestion is that Mount Druitt will need to include Woodcroft, but lose a small part of Doonside south of Bungaribee Road.

The resulting Blacktown district sits in the southeast corner of Blacktown LGA.

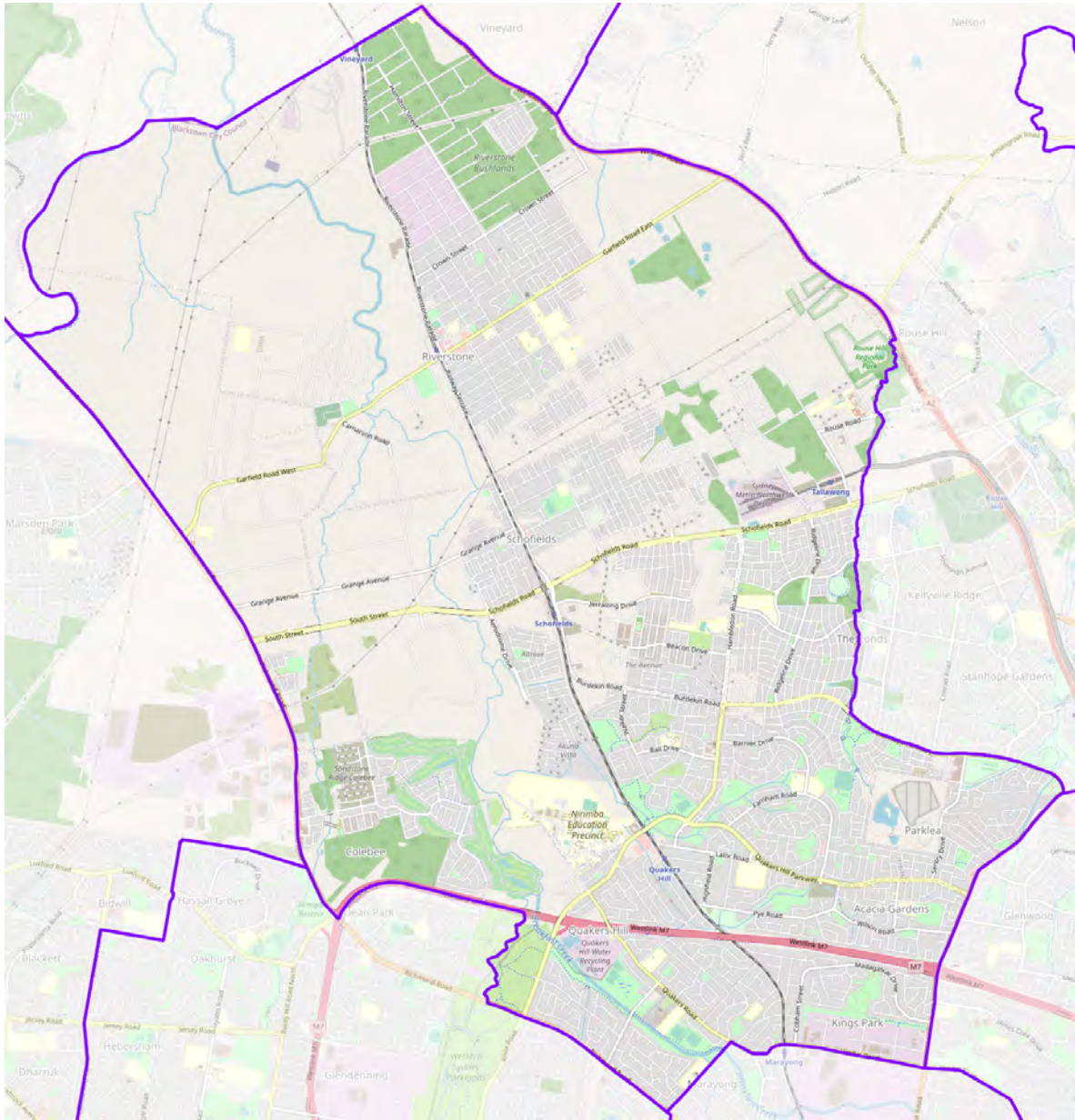


Figure 3.13: Alternative Riverstone

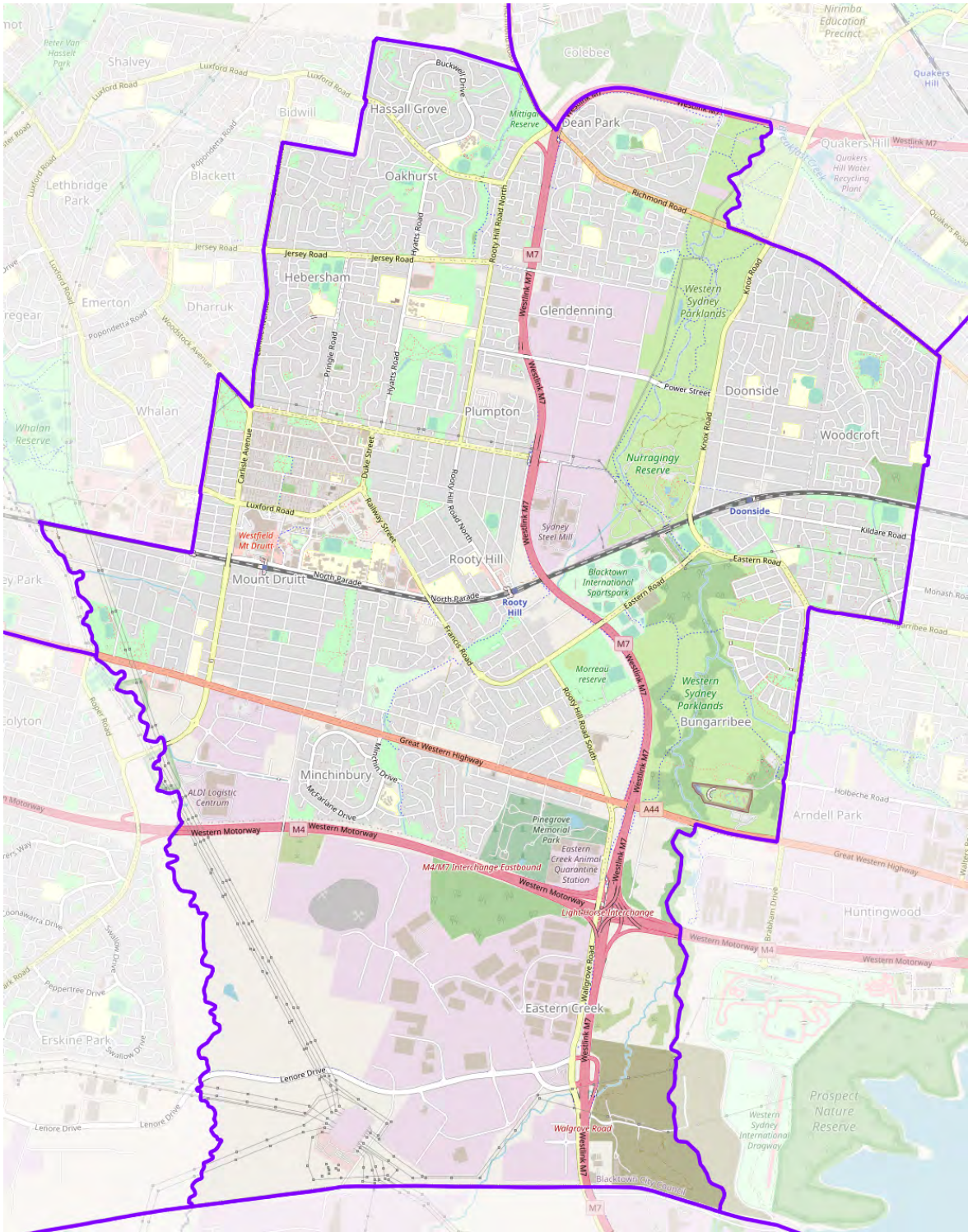


Figure 3.14: Alternative Mount Druitt



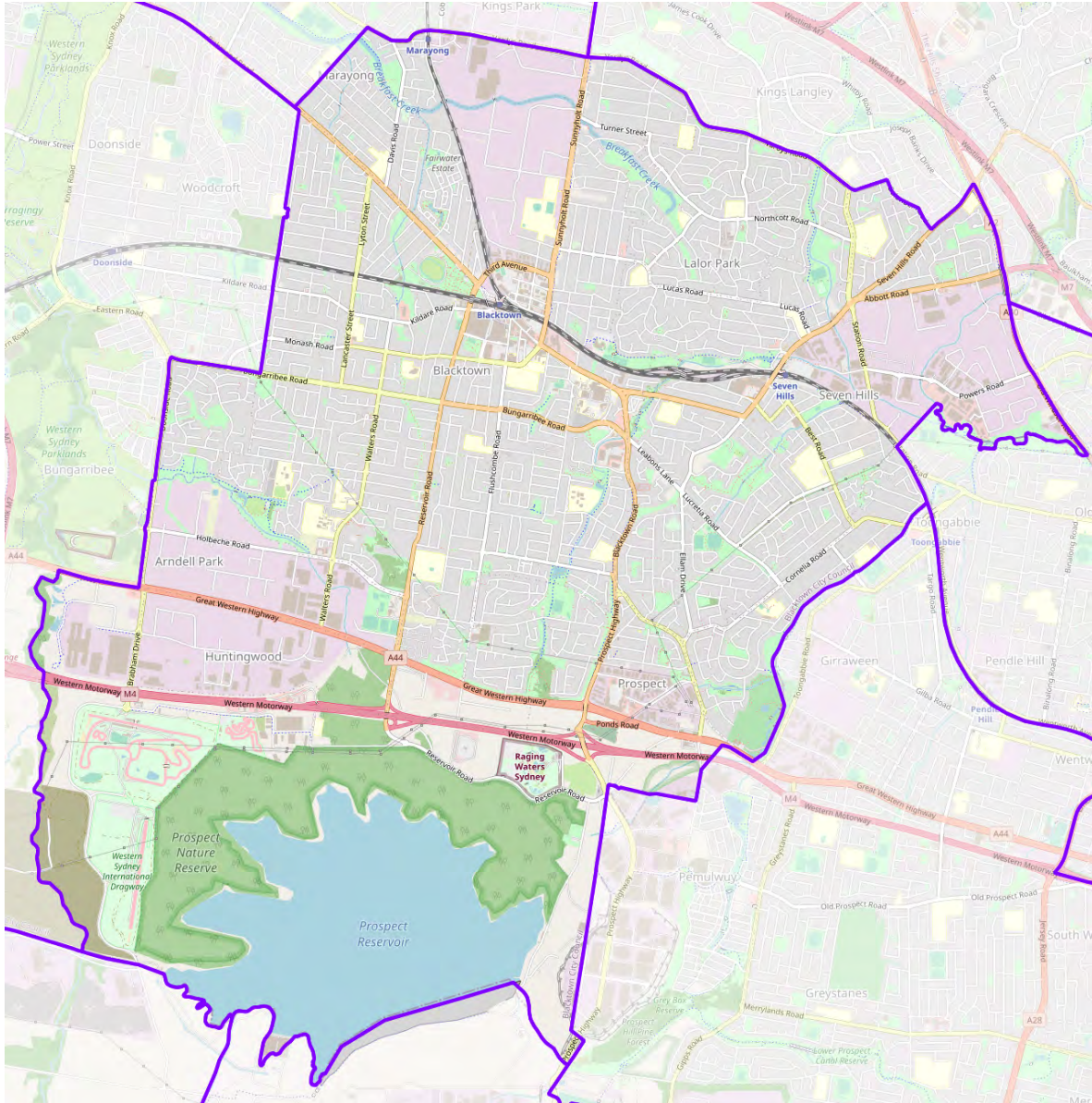


Figure 3.15: Alternative Blacktown

### 3.3 Other alternatives

I also considered some other alternatives. I do not have time to present a complete analysis of them, but I will briefly outline them:

- I explored an alternative that would see Hornsby largely retain its existing configuration, but retract to the Northern Line south of Asquith SSC, and gain parts of Cherrybrook northeast of New Line Road. I observe that many of the ideas in my preferred and alternative suggestions are still applicable and viable should the Panel opt for this approach. However, this approach presents a few significant problems, including difficulties in determining Willoughby district, and Lane Cove district crossing Lane Cove Road.
- There is a variation of the suggestion in this section that arises from uniting the remainder of Ryde LGA within Epping district. In this variation, Epping would form a roughly triangular shape, excluding Beecroft and Cheltenham, as well as the medium-density developments in Carlingford south of Moseley Street. This means Dundas would need to expand to include all of North Parramatta and Parramatta SSCs north of the Parramatta River, along with parts of Northmead. Unfortunately, this makes the Parramatta district even more awkward and disconnected. Perhaps the solution here would be to reorient Parramatta to a north-south alignment. This pushes Greystanes into Blacktown, and here we should really consider Greystanes a continuation of Prospect. Kings Langley will need to be transferred to Blacktown instead, and Winston Hills into Baulkham Hills.

## 4. Closing remarks

Enrolment data for the suggested districts are available in Appendix A. As can be seen, most districts are very close to a quota. Badgerys Creek, Kellyville, and Riverstone are direct victims of the current enrolment rule. Adjoining these districts are the indirect victims, namely, Blacktown, Camden, and Mulgoa. These districts need to be below quota to maintain regional equality.

There are some other districts with deviations between two and four percentage points, justified by other considerations. If the Panel intends on prioritising “one vote, one value” beyond what I have, it will only involve cutting around the edges.

I noticed quite late that the shortfall in Blacktown is greater than I had thought it was, and greater than it needs to be. The Panel may opt to rebalance the suggested Mount Druitt, Blacktown, Seven Hills, and Castle Hill districts, leaving all four slightly below quota to counterbalance Kellyville and Riverstone. I expect this will only come at the cost of weaker boundaries.

On a final note – I do not know whether this is imposed by the Panel, the NSWEC, or legislation – but I would ask whomever has the relevant authority to consider removing or liberalising the current enrolment rule for future redistributions.

I hope this suggestion has been informative and useful to the Panel and others contributing to the redistribution process. I look forward to seeing other suggestions, comments, and the Panel’s determination. Finally, I would like to thank the Panel and the NSW Electoral Commission for the hard work and vital role they perform in maintaining our democracy.

## A. Enrolment summary

Enrolment in suggested districts is tabulated in Tables A.1 and A.2, and in Table A.3 for districts in the alternative suggestion (Section 3).

The data in this tables is a guide only. While I have made a best effort into estimating these numbers as accurately as possible, some may differ significant from their actual value. I am only using the data provided by the NSWEC, which is offered at the SA1 level. In the case of small SA1s, I have calculated the enrolment by approximating the district using only SA1s. However, there are some SA1s with thousands of electors that are split between districts. In these cases, I have nothing to go by but my own guesswork based on satellite imagery. The districts affected by this are:

- Badgerys Creek and Camden, due to SA1 1150633,
- Baulkham Hills, Riverstone, and Rouse Hill in the alternative suggestion, due to SA1s 1131038, 1131229, and 1155902.

District	Current		Projected	
	Enrolment	Dev. (%)	Enrolment	Dev. (%)
Auburn	57,100	-0.16	57,802	-2.43
Badgerys Creek	52,087	-8.93	67,035	13.15
Balmain	57,805	1.07	59,054	-0.32
Bankstown	56,512	-1.19	58,829	-0.70
Blacktown	54,519	-4.68	55,469	-6.37
Blue Mountains	58,984	3.13	59,350	0.18
Cabramatta	59,694	4.37	59,651	0.69
Camden	51,745	-9.53	55,788	-5.83
Campbelltown	58,618	2.49	59,974	1.23
Canterbury	56,988	-0.36	58,029	-2.05
Castle Hill	58,288	1.91	58,741	-0.85
Coogee	59,430	3.91	60,081	1.41
Cronulla	56,507	-1.20	57,815	-2.41
East Hills	58,712	2.66	59,289	0.08
Epping	56,406	-1.38	59,719	0.80
Fairfield	59,259	3.61	59,445	0.34
Gordon	59,213	3.53	59,307	0.11
Gosford	56,715	-0.84	58,949	-0.50
Greystanes	58,919	3.02	60,382	1.92
Hawkesbury	58,303	1.94	60,009	1.29
Heathcote	57,569	0.66	57,747	-2.53
Heffron	53,711	-6.09	59,493	0.42
Holsworthy	59,446	3.94	60,655	2.38
Hornsby	58,263	1.87	59,054	-0.32
Kellyville	52,671	-7.91	61,986	4.63
Kogarah	58,323	1.98	58,929	-0.53
Lakemba	56,541	-1.14	58,197	-1.77
Lane Cove	58,154	1.68	59,187	-0.10
Liverpool	58,532	2.34	58,951	-0.49

Table A.1: Enrolment in suggested districts (1 of 2)

District	Current		Projected	
	Enrolment	Dev. (%)	Enrolment	Dev. (%)
Londonderry	53,661	-6.18	58,467	-1.31
Macquarie Fields	54,463	-4.77	58,631	-1.03
Manly	58,776	2.77	59,704	0.78
Maroubra	58,658	2.56	59,279	0.06
Mount Druitt	58,737	2.70	59,576	0.56
Mulgoa	54,313	-5.04	55,870	-5.70
Newtown	60,526	5.83	61,452	3.73
North Shore	56,931	-0.46	59,254	0.02
Oatley	59,383	3.83	59,705	0.78
Parramatta	51,534	-9.89	57,359	-3.18
Pennant Hills	59,640	4.28	59,433	0.32
Penrith	57,333	0.24	59,409	0.28
Pittwater	58,831	2.86	59,419	0.30
Riverstone	52,957	-7.41	61,960	4.58
Rockdale	56,609	-1.02	59,229	-0.03
Ryde	56,551	-1.12	58,871	-0.63
Seven Hills	58,378	2.07	58,356	-1.50
Strathfield	55,479	-3.00	59,642	0.67
Summer Hill	58,891	2.97	60,781	2.59
Sutherland	60,060	5.01	61,353	3.56
Sydney	56,917	-0.48	58,398	-1.43
Terrigal	57,511	0.56	58,864	-0.64
The Entrance	57,568	0.66	59,384	0.24
Vaucluse	56,046	-2.01	57,445	-3.04
Wakehurst	59,193	3.50	59,325	0.14
Willoughby	59,028	3.21	59,354	0.19
Wollondilly	58,065	1.52	60,869	2.74
Wyong	56,371	-1.44	59,788	0.92

Table A.2: Enrolment in suggested districts (2 of 2)

District	Current		Projected	
	Enrolment	Dev. (%)	Enrolment	Dev. (%)
Baulkham Hills	57343	0.26	58339	-1.53
Blacktown	57116	-0.13	58462	-1.32
Dundas	57320	0.22	58994	-0.42
Dural	57212	0.03	57477	-2.98
Epping	57299	0.19	60258	1.71
Hornsby	59793	4.55	60333	1.84
Ku-ring-gai	57379	0.33	57811	-2.42
Lane Cove	56388	-1.41	58124	-1.89
Mount Druitt	59164	3.45	59644	0.68
North Shore	57558	0.64	58948	-0.50
Parramatta	55098	-3.66	59468	0.38
Riverstone	51653	-9.69	60402	1.95
Rouse Hill	51520	-9.92	59967	1.22
Ryde	57790	1.04	60750	2.54
Willoughby	58463	2.22	58402	-1.42

Table A.3: Enrolment in alternative districts

## B. Overview map

A map of most districts included in this suggestion can be found in Figure B.1. A similar map for the alternative suggestion (Subsection 3) is included in Figure B.2.





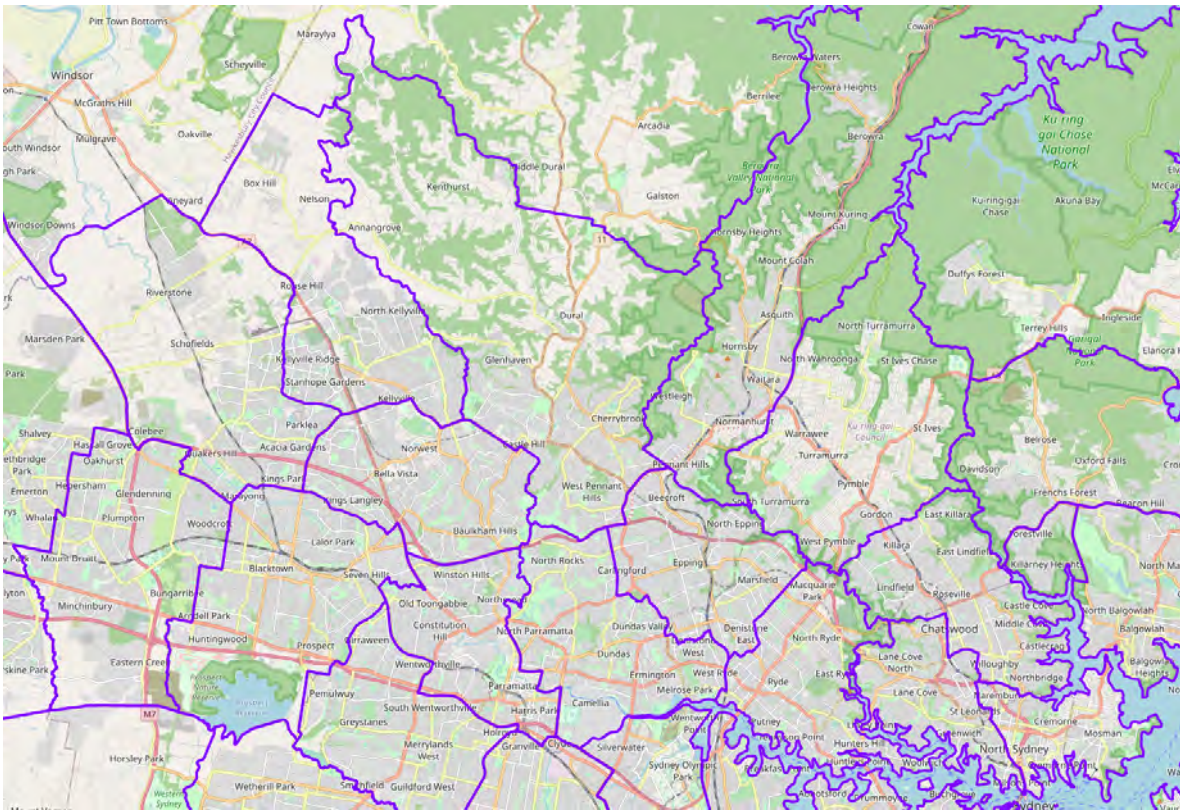


Figure B.2: Overview map of alternative districts