

Lithgow City Council by-election

8 April 2017



Report on the conduct of the election

CONTENTS

Contents.....	2
Election timetable.....	3
Foreword.....	4
Overview.....	5
By-election Summary.....	6
Lithgow city council.....	7
Conduct of the Election.....	8
Services to Candidates and Political Parties.....	18
Electoral Staffing.....	19
Election Costs.....	20
Appendices.....	21
References.....	31

ELECTION TIMETABLE

Activity	Date
Local Government expenditure period commenced	Friday 17 February
Registration for Candidates, Third Party Campaigners and Official Agents opened	Monday 27 February
Close of authorised rolls*	Monday 27 February
Close of nominations	Wednesday 8 March
Registration of how-to-vote material commenced	Wednesday 8 March
Final date for registration of Candidates	Wednesday 8 March
Pre-poll voting commenced	Monday 27 March
Registration of how-to-vote material closed	Friday 31 March
Final date for registration of Third-Party Campaigners	Friday 31 March
Postal voting applications closed	Monday 3 April
Declared Institution voting commenced	Monday 3 April
Pre-poll voting finished	Friday 7 April
Declared Institution voting concluded	Friday 7 April
Election day	Saturday 8 April
Local government expenditure period ended	Saturday 8 April
Return of postal votes closed	Monday 10 April
Distribution of preferences	Tuesday 11 April
Declaration of the poll	Wednesday 12 April

* For nominations and roll printing purposes.

FOREWORD

I am pleased to present to the NSW Government, the NSW Electoral Commission's report on the conduct of the Lithgow City Council Local Government by-election held on Saturday 8 April 2017.

Darryl Goodwin and Deanna Goodsell were declared elected Wednesday 12 April 2017.

I would like to thank all NSWEC staff involved in providing the Lithgow City Council Local Government by-election, as well as electors, councils, candidates, registered political parties and other stakeholders for their participation in this important event.

A handwritten signature in black ink that reads "John Schmidt". The signature is written in a cursive style with a large initial 'J' and a long, sweeping underline.

John Schmidt
Electoral Commissioner
30 November 2017

OVERVIEW

By-election outcome

The candidates elected at the Lithgow City Council by-election on Saturday, 8 April 2017 were:

- Darryl GOODWIN (Independent)
- Deanna GOODSSELL (Independent)

The count reports are available at the end of this report.

Candidates standing for election

Candidate Name	Group / Ungrouped	Party Affiliation
LEE, Peter	Group Number 1	Independent
GURNEY, Rod	Group Number 1	Independent
GOODSELL, Deanna	Ungrouped	Independent
HUNTER, Col	Ungrouped	Independent
GOODWIN, Darryl	Ungrouped	Independent
PEVERIL-GUEST, Greg	Ungrouped	Independent

Cost data

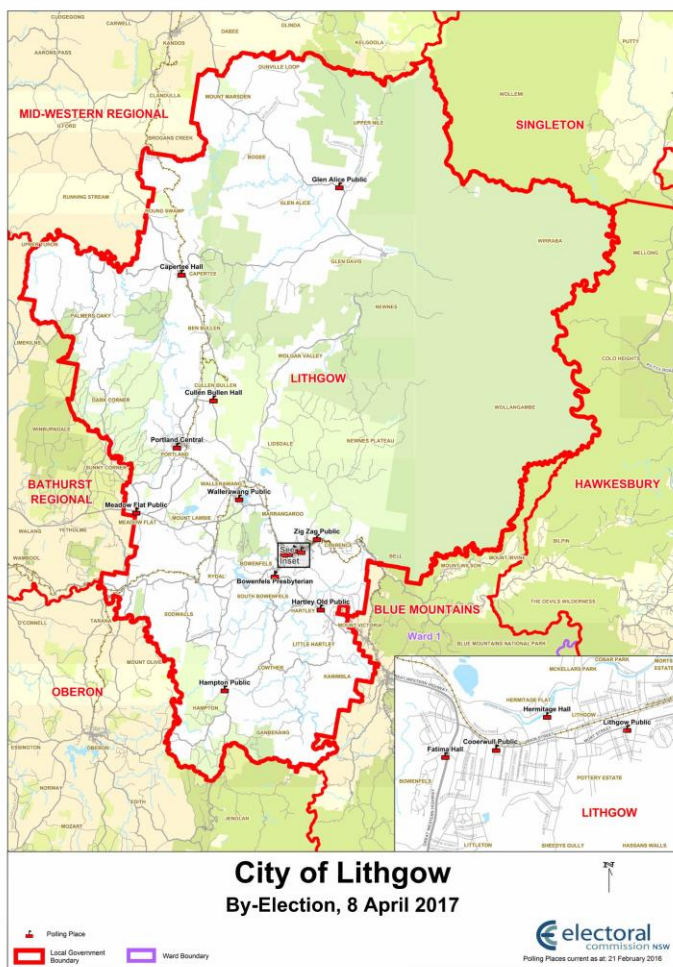
Cost of By-election	\$135,826
Cost per Elector	\$8.78

BY-ELECTION SUMMARY

Enrolment	
Total Electors	15,472
Electors enrolled or re-enrolled via SmartRoll	401
Voting venues	
Pre-poll venues	1
Polling Places	14
Declared Institutions	5
Voter Turnout	
Formal votes	11,777
Informal votes	911
Total votes	12,688
Voter turnout rate	82.01%
Formality rate	92.82%
Non-voting penalty notices issued	2,164 ¹
Penalty notices issued as % of Roll	13.99%
Voting Options used by Electors	
Ordinary	12,099
Declaration votes	589
Candidates	
Total candidates	6

¹ A penalty notice is withdrawn if an elector provides a valid excuse for not voting. At the date of this report the enforcement process for failure-to-vote penalty notices for this by-election had not yet been completed.

LITHGOW CITY COUNCIL



Suburbs wholly within the council's boundaries	
Ben Bullen	Blackmans Flat
Bogee	Bowenfels
Capertree	Clarence
Cobar Park	Corney Town
Cullen Bullen	Dargan
Dark Corner	Doctors Gap
Dunville Loop	Glen Alice
Good Forest	Hampton
Hartley	Hartley Vale
Hassans Walls	Hermitage Flat
Kanimbla	Lidsdale
Lithgow	Little Hartley
Littleton	Lowther
Marrangaroo	Mckellars Park
Morts Estate	Mount Lambie
Newnes	Oaky Park
Palmers Oaky	Pipers Flat
Portland	Pottery Estate
Rydal	Sheedys Gully
Sodwalls	South Bowenfels
South Littleton	Springvale
State Mine Gully	Upper Nile
Vale of Clwydd	Wallerawang
Wolgan Valley	Wollangambe

Suburbs partially within the council's boundaries		
Ganbenang	Meadow Flat	Megalong
Megalong Valley	Mount Marsden	Round Swamp
Running Stream	Sunny Corner	Tarana
Upper Turon		

CONDUCT OF THE ELECTION

Background

Lithgow City Council is an undivided council with nine councillors.

Performance

The service standards in the 2014-16 NSWEC Election Service Charter were applied to the Lithgow City Council by-election. In short, the NSWEC undertakes to:

- Foster participation in the democratic process
- Provide seamless service delivery
- Be customer focussed and commercially minded
- Be innovative and fast adaptors

The Service Charter can be found at

Comparisons to 2016 Local Government elections

Comparative data on key indicators for the Lithgow City Council in the 2017 by-election and the 2016 ordinary election.

Voter Participation		
	2016 Election	2017 By-election
Total Electors	15,447	15,472
Formal Votes	12,357	11,777
Informal Votes	605	911
Total Votes	12,962	12,688
Voter Turnout	83.91%	82.01%
Informality	4.67%	7.18%
Pre-poll Voting Centres	2	1
Polling Places	15	14
Election Officials	81	83
Cost per elector	\$6.85	\$8.78

It should be noted that voter 'turnout' is not synonymous with voter 'participation'. 'Turnout' refers to electors who have had their names marked off the roll and are taken to have voted. 'Participation' refers to electors who either had their names marked off the roll or have provided an acceptable reason for not doing so. To arrive at the participation rate, that figure needs to be adjusted, for example, by removing those electors who have an acceptable reason for not voting and deceased electors. It is not possible to establish the participation rate until processes regarding electors who appear to have failed to vote are finalised.

Communications

Advertising

The 2017 Local Government By-election advertising campaign Lithgow City Council consisted of council specific statutory advertisements and non-statutory advertising. Non-statutory advertising included information about registering as a third-party campaigner or candidate under the *Election Funding, Expenditure and Disclosures Act 1981* (EFED Act).

Statutory campaign

Prior to the election the NSWEC consulted with Lithgow City Council to determine in which local newspapers the statutory advertisements, required under the legislation, were to be placed and the frequency of those placements.

Items covered in the statutory advertisements included:

- enrolment on residential and non-residential rolls;
- nomination information;
- candidates and polling place information; and
- election results.

Reproductions of these newspaper advertisements can be found at Appendices B-D.

Social media

The NSWEC utilised social media to raise awareness of the election, promote voter participation, and communicate the responsibilities of political participants.

Due to the common election date (8 April) for two local government by-elections (Blacktown City Council, Ward 2 and Lithgow City Council) and three State by-elections (Districts of Gosford, Manly, and North Shore), social media content referenced all five by-elections.

There were 11 Facebook posts and eight tweets published for these five by-elections covering the topics of:

- nominations;
- the announcement of candidates;
- pre-poll and postal voting details;
- election campaign finance rules.

The Facebook posts and tweets were seen a total of 178,383 and 22,270 times, respectively.

The top performing tweet and Facebook post are shown below.



Direct communications with political participants

Direct communications to candidates, third-party campaigners and official agents were made for the Lithgow City Council by-election using email and letters. The direct communications covered the topics of:

- confirmation of candidate and third-party campaigner registrations,
- advice to nominated candidates of the requirements to appoint an official agent,
- confirmation of official agent registrations,
- advice to official agents on the rules for managing the election campaign finances of candidates and third-party campaigners.

Website

A NSWEC website was specifically setup for the Lithgow City Council by-election for stakeholders to source information on:

- the election timetable;
- election employment opportunities;
- enrolment requirements and online enrolment confirmation;
- methods for voting;
- Local Government political parties;
- candidates;
- polling place lookup facility; and
- election results.

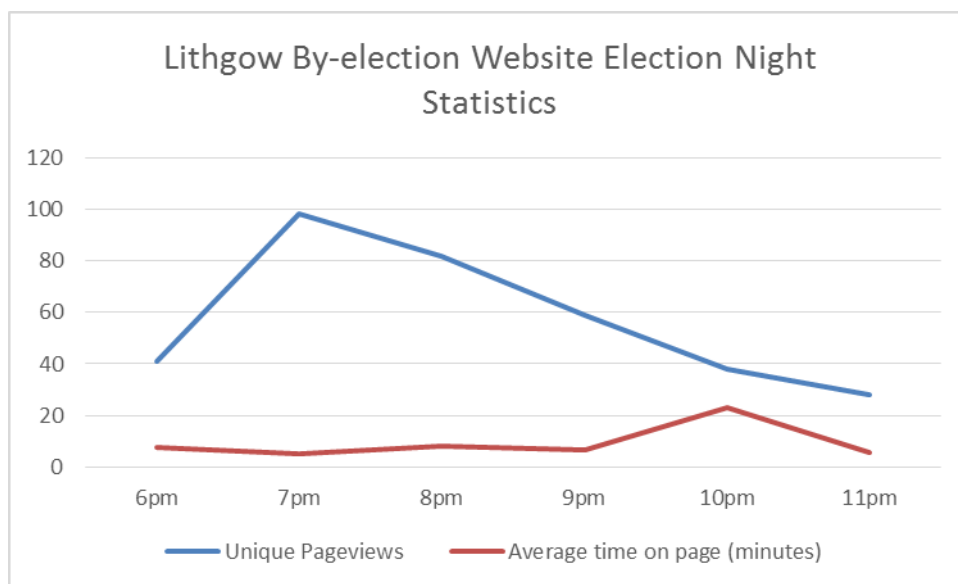
An enrolment search facility on the NSWEC website was available to assist electors to verify their enrolment information.

Polling place information provided on the website included accessibility information for electors with a disability.

Lithgow City Council provided a link on its website to the NSWEC site. The NSWEC's website experienced 5,935 page views in the month leading up to the election.

Use of the NSWEC's website is typically greatest on election night when users seek information on results. The graph below provides a picture of usage over the period from close of polling to midnight on election night for the Lithgow City Council by-election. A total of 553 page views were recorded on election day.

Graph 1: Lithgow City Council by-election – Usage of the NSWEC Website for Poll Results, 8 April 2017



Registrations

Registrations for candidates closed on 8 March 2017. Registrations for third-party campaigners closed on 31 March 2017.

Eight candidates were registered under the EFED Act for the Lithgow City Council by-election. Four candidates applied to be registered before the close of nominations and four candidates were registered by the NSWEC upon close of nominations as required by the EFED Act. Two candidates who registered did not go on to nominate for election.

All candidates appointed an official agent as required under the EFED Act.

There were no third-party campaigners registered for the by-election. Following the declaration of the polls, we advised the elected candidates of their obligations under the EFED Act as an elected member. Both elected members were designated by the NSWEC to be their own official agent (as elected members) and they have an ongoing obligation to disclose on an annual basis (during their term as a councillor) any political donations made or received and electoral expenditure incurred.

Nominations

Nominations closed at midday on 8 March 2017.

A total of six nominations were received by close of nominations.

The draw for ballot paper position, held at 2pm on 8 March 2017, was conducted by the Returning Officer at the Returning Officer's office.

For a nomination to be accepted by the Returning Officer, candidates were required to complete a nomination form and a Candidate Information Sheet. Candidates were also required to submit a statistics form and pay a nomination deposit of \$125 to the Returning Officer.

The nomination deposit is refunded to candidates if:

- a candidate is elected or receives at least four per cent of the total first preference votes;
- in a group, any one of the group is elected or receives at least four per cent of the total first preference votes; or
- the election is uncontested.

Rolls

Residential roll

In NSW, enrolment and voting are compulsory at all Federal, State and Local Government elections. The NSW electoral roll is managed by the NSWEC in conjunction with the Australian Electoral Commission.

Legislation provides that for Local Government elections the electoral roll closes on the 40th day before the day of the election. Any person who was on the roll when it closed at 6pm on Monday 27 February 2017 was required to vote.

There were 15,472 electors on the residential electoral roll for Lithgow City Council. This was an increase of approximately 25 electors from the number on the roll for the Local Government Elections in September 2016.

Non-residential roll

The non-residential roll is comprised of the roll of non-residential electors and the roll of occupiers and rate-paying lessees. The non-residential roll lapses after each election. Inclusion on the non-residential roll of electors is available to electors who pay rates to the council on property they own but do not occupy, as well as people who occupy or lease property. Under the *Local Government Act 1993*, the council's General Manager is responsible for compiling and maintaining the non-residential roll of electors.

There were 10 electors on the non-residential roll for Lithgow City Council for the 2017 by-election.

Voting

Method of voting

Section 285 *Local Government Act 1993* prescribes that the voting system in a contested election of a councillor or councillors is to be:

- optional preferential if the number of councillors to be elected is one; or
- proportional representation if the number of councillors to be elected is two or more.

For this by-election, proportional preferential was the method used. A reproduction of the Ballot Paper is shown at Appendix E: Lithgow City Council by-election – ballot paper.

Absent voting

Unlike State and Federal elections, absent voting is not available at NSW Local Government elections for electors who are outside their council area or ward on election day.

Early voting

Pre-poll voting

Pre-poll voting opened at 8am on Monday, 27 March and closed at 6pm on Friday, 7 April 2017. The pre-poll location was:

- Lithgow Returning Officer's Office, 47 Main Street, Lithgow

Postal voting

Electors who are registered as a Registered General Postal Voter at State level are not required to register again for Local Government elections and were therefore automatically sent postal vote ballot papers.

Applications for postal voters opened on nomination day with electors able to obtain applications from the NSWEC website, the NSWEC head office or the Returning Officer's office. Applications for postal voting closed at 5pm, on Monday, 3 April 2017.

In order to be admitted to the count postal votes needed to be received by the Returning Officer by 6pm on Monday, 10 April 2017. Of 403 postal votes Issued, 307 were accepted, 39 rejected and 57 not scrutinised, because they were either returned too late or not returned at all.

Declared Institutions

The Electoral Commissioner has the authority to appoint hospitals, nursing homes, retirement villages and like facilities as Declared Institutions, to assist the residents and/or patients of these facilities who are unable to attend a polling place on election day.

Election officials visited Declared Institutions from the Monday until Wednesday before election day.

A total of five institutions were visited:

- Cooinda Aged Peoples Home
- Lithgow Hospital
- Portland Tabulam Health Centre
- Tanderra Nursing Home
- Three Tree Lodge

Election day voting

Polling places

Securing appropriate premises for polling places can be difficult. The NSWEC does not own facilities within council areas. The pool of available rental premises is limited by the short-term nature of the lease and the NSWEC's space, accessibility, location and workplace health and safety requirements.

The NSWEC provided council with a draft list of proposed polling places to be used at this election. Feedback from the council was taken into consideration prior to the final selection of polling places.

As far as practically possible, the NSWEC aimed to provide accessible and appropriately sited polling places for the by-election. Information was provided to assist electors with mobility issues or other disabilities to locate the most suitable polling place. This access information was provided on the NSWEC's website and by NSWEC staff.

There were 14 polling places across the Lithgow City Council area on election day. Of those, three were fully wheelchair accessible, nine were accessible with assistance, and two did not meet accessibility requirements. The NSWEC website provided details of which polling places were accessible with assistance and the restrictions on accessibility where relevant. A list of polling places and their accessibility rating can be viewed at Appendix F: Lithgow City Council by-election - polling places and accessibility.

Polling places were open to electors from 8am to 6pm on election day.

Counting the votes

On election night all polling places conducted an initial sort and count of first preference votes. At the Returning Officer's office, declaration (i.e. postal, pre-poll and Declared Institution) votes are opened, sorted and first preferences are counted. The count results were placed on the NSWEC website on election night from 6:30pm onwards.

The successful candidate was declared elected by the Returning Officer at 4pm on Wednesday, 12 April 2017, following the statutory 24-hour period required for any recount requests.

Once the declaration of the election result had been signed by the Returning Officer, copies of the declaration were provided to the Electoral Commissioner, the Council's General Manager and the Chief Executive, Office of Local Government. In addition, the Returning Officer advised all candidates by phone, email or SMS that the election results were available on the NSWEC website. Election results were also published in local press.

Braille ballot papers

No braille ballot papers were requested for electors at this election.

Non-voters

Failure to vote

Under electoral legislation, the NSWEC is required to issue 'failure to vote' notices to those electors whose names were not marked off the electoral roll as having voted or as having provided a valid excuse.

All electoral rolls marked at polling places and in the Returning Officer's office were scanned after election day to create a list of non-voters. The penalty for failing to vote without a valid reason at a Local Government election is \$55.00.

For this election, 2,164 penalty notices were issued within the three-month period after election day.²

² A penalty notice is withdrawn if an elector provides a valid excuse for not voting. At the date of this report the enforcement process for failure-to-vote penalty notices for this by-election had not yet been completed.

SERVICES TO CANDIDATES AND POLITICAL PARTIES

Candidate information

A candidate information presentation was available on the NSWEC website to assist prospective candidates in their preparation for the election.

The presentation provided prospective candidates with the opportunity to familiarise themselves with the candidate process. Major topics covered in the presentation include:

- the election timetable;
- candidate eligibility criteria and how to nominate;
- groups of candidates and political party names on ballot papers;
- campaigning (election advertising, 'how-to-vote' material and public scrutiny of candidates);
- complaints handling by NSWEC;
- voting and counting ballot papers;
- scrutineers; and
- election funding obligations.

The NSWEC *Handbook for Parties, Groups, Candidates and Scrutineers*, which outlines relevant electoral processes and procedures for local government elections, was also made available to stakeholders.

Information about election processes and election campaign finance rules was also provided to candidates, political parties and others who made telephone or email enquiries.

A fact sheet for local government by-elections was published on the website to support candidates and other political participants understand the requirements for managing political donations and electoral expenditure.

How-to-vote material

All electoral material to be distributed by candidates or their representatives on election day must be registered by the NSWEC. Registration does not apply to posters, whether they are displayed before or on election day, nor is it required for material to be distributed before election day.

Candidates are required to provide an application form and a copy of each item to be registered. The NSWEC provided candidates with guidelines to assist them to meet the registration requirements. A candidate help line was also set up by the NSWEC to aid candidates.

ELECTORAL STAFFING

Returning Officer

The Returning Officer had a number of responsibilities which were central to the running of the election, including:

- set up and decommissioning of a temporary office;
- training of office staff and polling place managers;
- making arrangements for voting at polling places and Declared Institutions;
- issuing and processing postal and pre-poll votes;
- dealing with enquiries and complaints from candidates and the public;
- processing candidate nominations; and
- counting of votes and declaring the result of the election.

The Returning Officer's office for the Lithgow City Council by-election was located at:

- 47 Main Street, Lithgow

Returning Officer Support Officer

A Returning Officer Support Officer (ROSO) was appointed in order to provide support on electoral matters and procedures in the conduct of the election.

Staffing

Staffing is a significant cost for elections and, as such, the NSWEC recognises the importance of accurately predicting the number of required staff while taking into consideration the associated costs without compromising the level of service to electors.

The level of staffing required for the by-election varied during the different phases of the election. Staff were employed to undertake a variety of tasks including:

- office setup;
- packing materials for each polling place;
- registration, distribution and receipt of postal votes;
- operation of pre-poll voting;
- visits to Declared Institutions;
- counting of the votes; and
- office pack-up.

All polling places have a minimum of two staff, one of whom is the polling place manager.

ELECTION COSTS

Councils are required to meet the costs of conducting their elections. While the NSW Government does not provide direct funding for local government elections, some NSWEC services required for local government elections, such as enrolment and non-voting services, are provided by the NSWEC at no cost. It should also be noted that services provided to candidates, political parties and others regarding the requirements of the EFED Act are provided by the NSWEC at no cost.

Key cost drivers for the election included:

- election officials' wages;
- office accommodation for the Returning Officer;
- information and technology support;
- polling places;
- number of electors in council area;
- newspaper and elector brochure advertising; and
- printing/materials for polling places.

The final cost of NSWEC conducting the election was \$135,826 (GST exclusive).

This was made up of election staffing \$83,871; venues \$12,020; logistics \$6,134; ballot papers and electoral rolls \$4,375; other miscellaneous items \$18,596 and Election Management Fee \$10,830. The cost per elector was \$8.78.

APPENDICES

Appendix A: NSWEC Election Service Charter 2014-16	22
Appendix B: Lithgow City Council by-election – enrolment and register as a third-party campaigner advertisements	24
Appendix C: Lithgow City Council by-election – notice of election advertisement.....	25
Appendix D: Lithgow City Council by-election – declaration of poll advertisement	26
Appendix E: Lithgow City Council by-election – ballot paper	27
Appendix F: Lithgow City Council by-election - polling places and accessibility.....	28
Appendix G: Lithgow City Council by-election – Check count by polling place	30
Appendix H: Lithgow City Council by-election - distribution of preferences.....	31

Appendix A: NSWEC Election Service Charter 2014-16

Goal 1 - Foster participation in the democratic process

To be achieved by:

- Conducting impartial and fair elections in accordance with the law
- Providing services and information to enable all election participants to participate fully including communities with historically lower participation rates
- Communicating election information in ways that encourage awareness and engagement
- Supporting events and activities that encourage participation in democracy

Success measured by:

- Election participants report conduct of election as impartial and fair and without barriers to participation
- Election participation equals or exceeds prior election levels
- Formality rates equal or exceed prior election levels
- There are no Court challenges to declared results

Goal 2 - Provide seamless service delivery

To be achieved by:

- Providing comprehensive services including:
 - information services
 - enrolment services
 - voting options including pre-poll and technology enabled voting
 - location and accessibility of polling places
 - services to assist those with particular needs
 - responsibilities and entitlements of candidates, groups and political parties including funding and disclosure requirements
- Providing efficient services to meet needs of participants according to legislative mandate
- Providing election services in timely, efficient and professional manner

Success measured by:

- Stakeholders feel well informed about election events
- Election participants report satisfaction with the NSWEC's electoral services

Goal 3 - Be customer focussed and commercially minded

To be achieved by:

- Understanding the needs of our stakeholders and users of our election services through liaison, consultation and structured feedback
- Ensuring elections are provided on a competitive basis
- Delivering well organised, reliable and quality elections

Success measured by:

- Participants report satisfaction with NSWEC's services and election staff
- Those entities using the NSWEC to conduct elections report satisfaction with services provided and see these are representing value (Note this is not applicable in the case of State Government elections and by-elections, which must be conducted by the NSWEC.)
- Costs of providing elections are recovered (Note this is not applicable in the case of State Government elections and by-elections.)
- The NSWEC actively seeks feedback on its services

Goal 4 - Be innovative and fast adaptors


To be achieved by

- Utilising new technologies to increase convenience for those participating in elections within the legislative mandate while maintaining integrity of the election and security of information
- Review developments in election services and funding and disclosure across Australia and internationally for possible application to NSW

Success measured by:

- The NSWEC is seen as seeking to adapt its services, within legislative requirements, to meet participants' needs
- The NSWEC advises Government of innovations that will strengthen the democratic system and improve administration of elections

Appendix B: Lithgow City Council by-election – enrolment and register as a third-party campaigner advertisements



**CITY OF LITHGOW
BY-ELECTION
SATURDAY, 8 APRIL 2017**

A by-election will be held in the City of Lithgow local government area on Saturday, 8 April 2017 to elect two councillors.

Enrol To Vote

Non-residential Rolls
If you are an owner, rate-paying lessee or occupier of rateable land which is not your primary residence, you or a nominee may be entitled to be enrolled on the roll of non-residential owners of rateable land or the roll of occupiers and rate-paying lessees for this election.

Details of the eligibility criteria and enrolment claim forms may be obtained from the City of Lithgow Council office at 180 Mort Street, Lithgow NSW 2790; Phone (02) 6364 9999; Fax (02) 6361 4269; Website: council.lithgow.nsw.gov.au, or will be forwarded to you upon request to the council.

The claim must be completed and lodged with the General Manager of City of Lithgow Council by **6pm Monday, 27 February 2017**.

If a claim for non-residential enrolment was made for a previous election, and you wish to claim enrolment for this election, you must re-apply.

Residential Roll
All electors enrolled on the Commonwealth/State electoral roll as at **6pm Monday, 27 February 2017** residing in City of Lithgow local government area will be included on the roll for the by-election.

To check your enrolment details or to obtain a residential enrolment form visit www.elections.nsw.gov.au or call 1300 186 788. Enrolment forms are also available from any Australia Post office. Enrolment forms must be received by **6pm Monday, 27 February 2017**.


Voting in Local Government elections is compulsory for all electors included on the residential roll.

Information: www.elections.nsw.gov.au or 1300 135 736

For enquiries in languages other than English call our interpreting service on 13 14 50

For hearing and speech impaired enquiries, call us via the National Relay Service on 13 36 77

John Schmidt, Electoral Commissioner



**CITY OF LITHGOW
BY-ELECTION
SATURDAY, 8 APRIL 2017**

Register as a third-party campaigner or candidate

A by-election will be held in the City of Lithgow local government area on Saturday, 8 April 2017 to elect two councillors.

If you intend to participate in the election as a third-party campaigner or candidate, there are strict rules you must understand and comply with before you accept political donations or incur campaign expenditure.

Register as a third-party campaigner
Before you spend more than \$2,000 to promote or oppose a candidate or political party at the by-election you must register as a third-party campaigner with the NSW Electoral Commission, appoint an official agent, and open a campaign account.

The last date for registration of third-party campaigners is **31 March 2017**.

If you were registered as a third-party campaigner for a previous election, you must reapply to be registered for the by-election.

Register as a candidate
If you intend to contest the by-election as a candidate, you must register with the NSW Electoral Commission and appoint an official agent before accepting political donations or incurring campaign expenditure.

Registering for the election is a separate process to being nominated as a candidate for the election. To be nominated for the election, and have your name included on the ballot paper, you must also complete and submit a nomination form.

The last date for registration of candidates is **8 March 2017**.

If you registered as a candidate for a previous election, you must reapply to be registered for the by-election.

Information: www.elections.nsw.gov.au or 1300 088 942

Registration forms and other important nomination and electoral information are available from the NSW Electoral Commission website: www.elections.nsw.gov.au

For enquiries in languages other than English call our interpreting service on 13 14 50
For hearing and speech impaired enquiries, call us via the National Relay Service on 13 36 77

Enrol + Register as a TPC or candidate


Lithgow Mercury

Friday, 17 February 2017

Village Voice

Friday, 17 February 2017

Appendix C: Lithgow City Council by-election – notice of election advertisement



**CITY OF LITHGOW
BY-ELECTION
SATURDAY, 8 APRIL 2017**

A by-election will be held in the City of Lithgow local government area on Saturday, 8 April 2017 to elect two councillors.

If you are enrolled in the City of Lithgow local government area, you must vote. To check your enrolment details, visit www.elections.nsw.gov.au or call 1800 185 786.

Voting on election day
Voting will take place on Saturday, 8 April 2017 between the hours of 8am and 6pm.

A list of polling places is available by visiting www.elections.nsw.gov.au or calling 1800 185 786.

Voting before election day
You may be entitled to a postal or pre-poll vote. For details, visit our website or call us.

Voting early in person
You can vote early in person from Monday, 27 March 2017 at the Returning Officer's Office: 47 Main Street, Lithgow.

Pre-poll voting hours:

- Monday, 27 March to Friday, 31 March: 8.15am - 4.30pm
- Monday, 8 April to Thursday, 6 April: 8.15am - 4.30pm
- Friday, 7 April: 8.15am - 6.00pm

Voting by Post
You can apply online for a postal vote from www.elections.nsw.gov.au or by calling 1800 185 786. Your application must be completed and received by the NSW Electoral Commission no later than 6pm Monday, 8 April 2017.

Name of Candidate	Party Affiliation
Group A	
LEE, Peter	Independent
GURNEY, Rod	Independent
Ungrouped Candidates	
GOODSELL, Deanna	Independent
HUNTER, Ooi	Independent
GOODWIN, Darryl	Independent
PEVERIL-GUEST, Greg	Independent

CANDIDATE INFORMATION SHEETS
Each candidate's information sheet is available for viewing at www.elections.nsw.gov.au or at the Returning Officer's office.

Voting is compulsory
Voting is compulsory for all electors of the City of Lithgow local government area. The penalty for not voting is \$66.

Information: www.elections.nsw.gov.au or call 1300 135 736

For enquiries in languages other than English, call our Interpreting service 18 14 60

For hearing and speech impaired enquiries, call us via the National Relay Service on 18 36 77

Jennifer Dash
Returning Officer

Nominations, Candidate seminar, Register as a candidate

Lithgow Mercury

Tuesday, 21 February 2017

Village Voice

Friday, 24 February 2017

Appendix D: Lithgow City Council by-election – declaration of poll advertisement



CITY OF LITHGOW BY-ELECTION SATURDAY, 8 APRIL 2017 Result of Election

An election was held to elect two councillors.

I declare

**Darryl GOODWIN
Deanna GOODSELL**

elected as councillors until the next ordinary election of the Council.

**Detailed results are available from the
NSW Electoral Commission website.**

Jennifer Dash
Returning Officer
12 April 2017

**Information:
www.elections.nsw.gov.au
or 1300 135 736**

For enquiries in languages other than English
call our interpreting service 13 14 50.

For hearing and speech impaired enquiries,
call us via the National Relay Service on
13 36 77.


Results

Lithgow Mercury

Tuesday, 18 April 2017

Village Voice

Friday, 14 April 2017

Held on 8 April 2017 

City of Lithgow BALLOT PAPER FOR ELECTION OF 2 COUNCILLORS


▶ DIRECTIONS FOR VOTING PLEASE READ CAREFULLY

Place the number **1** in the square next to the candidate of your choice. If you wish to vote for any more candidates, place consecutive numbers starting with **2** in the squares next to those candidates in order of your preferences for them.

CANDIDATES

GROUP A	
<input type="checkbox"/> LEE Peter Independent	<input type="checkbox"/> GOODSELL Deanna Independent
<input type="checkbox"/> GURNEY Rod Independent	<input type="checkbox"/> HUNTER Col Independent
	<input type="checkbox"/> GOODWIN Darryl Independent
	<input type="checkbox"/> PEVERIL-GUEST Greg Independent

You must not take a ballot paper out of the polling place



Appendix F: Lithgow City Council by-election - polling places and accessibility

Polling place name	Venue type	Address	Locality	Accessibility
Lithgow Returning Officer's Office	Returning Office	47 Main Street	Lithgow	No wheelchair access
Bowenfels Presbyterian Church Hall	Polling Place	Mudgee Street	South Bowenfels	Building has lips and/or steps, No designated accessible parking spot, No accessible toilet, Path of travel from car park may be difficult
Capertee and District War Memorial Hall	Polling Place	Castlereagh Highway	Capertee	Building has lips and/or steps, No designated accessible parking spot, No accessible toilet, Path of travel from car park may be difficult
Coerwull Public School	Polling Place	319 Main Street	Lithgow	Fully wheelchair accessible
Cullen Bullen Progress Hall	Polling Place	Castlereagh Highway	Cullen Bullen	No designated accessible parking spot, No accessible toilet
Fatima Hall	Polling Place	Tweed Road	Bowenfels	No designated accessible parking spot, Path of travel from car park may be difficult
Glen Alice Public School	Polling Place	Beaumont Street	Glen Alice	No wheelchair access
Hampton Public School	Polling Place	19 Bindo Road	Hampton	Building has lips and/or steps, No designated accessible parking spot, No accessible toilet, Path of travel from car park may be difficult
Hartley Old Public School	Polling Place	15 Mid Hartley Road	Hartley	No designated accessible parking spot, No accessible toilet, Path of travel from car park may

				be difficult, Building has lips and/or steps
Hermitage Progress Association Hall	Polling Place	Albert Street	Hermitage Flat	Building has lips and/or steps, No designated accessible parking spot, Path of travel from car park may be difficult
Lithgow Public School	Polling Place	Eskbank Street	Lithgow	Fully wheelchair accessible
Meadow Flat Public School	Polling Place	2630 Great Western Highway	Meadow Flat	No designated accessible parking spot, No accessible toilet
Portland Central School	Polling Place	Villiers Street	Portland	No designated accessible parking spot, No accessible toilet, Path of travel from car park may be difficult
Wallerawang Public School	Polling Place	Barton Avenue	Wallerawang	Fully wheelchair accessible
Zig Zag Public School	Polling Place	23 Victoria Avenue	Lithgow	No designated accessible parking spot, No accessible toilet, Path of travel from car park may be difficult

Appendix G: Lithgow City Council by-election – Check count by polling place

First Preference Votes Report Councillor Election: Lithgow

Report was last updated on 24 November 2017 at 4pm

Venue and Vote Types	LEE Peter	GURNEY Rod	GOODSELL Deanna	HUNTER Col	GOODWIN Darryl	PEVERIL- GUEST Greg	Total formal	Informal	Total votes/ ballot papers
Polling places									
Bowenfels Presbyterian Church Hall	3	5	40	50	101	33	232	13	245
Capertee and District War Memorial Hall	6	3	18	37	31	7	102	6	108
Cooerwull Public School	83	56	392	254	505	121	1411	114	1525
Cullen Bullen Progress Hall	8	9	23	31	46	8	125	13	138
Fatima Hall	53	39	112	110	201	46	561	51	612
Glen Alice Public School	3	5	7	33	17	0	65	15	80
Hampton Public School	5	10	16	35	11	1	78	8	86
Hartley Old Public School	16	14	70	130	92	17	339	35	374
Hermitage Progress Association Hall	25	14	63	73	142	30	347	30	377
Lithgow Public School	92	37	190	194	336	54	903	84	987
Meadow Flat Public School	5	3	22	58	31	4	123	4	127
Portland Central School	39	26	187	206	305	39	802	131	933
Wallerawang Public School	31	38	140	166	386	50	811	77	888
Zig Zag Public School	8	22	43	28	90	19	210	10	220
Total polling place ordinary votes	377	281	1323	1405	2294	429	6109	591	6700
Declaration Votes									
Lithgow RO Office	274	233	1022	1021	2190	369	5109	290	5399
Declared Institution	25	16	68	51	98	8	266	16	282
Postal	20	20	65	62	109	17	293	14	307
Total declaration votes	319	269	1155	1134	2397	394	5668	320	5988
Total votes/ballot papers	696	550	2478	2539	4691	823	11777	911	12688
% of formal votes/ballot papers	6.17	4.60	21.66	23.00	37.55	7.02	100	-	-
% of total votes/ballot papers	5.49	4.33	19.53	20.01	36.97	6.49	92.82	7.18	100

Appendix H: Lithgow City Council by-election - distribution of preferences

NSW LOCAL GOVERNMENT BY-ELECTION RESULTS

Saturday 08 April 2017

City of Lithgow - Party or Group and Candidates Result Report

Last updated on 11/04/2017 14:04

Candidates to be Elected: 2

Counts Required: 5

Quota: 3,926

The margin between the last elected candidate GOODSELL Deanna and the last un-elected/excluded candidate HUNTER Col is 446.

Group	Candidates in Ballot Order	Elected / Excluded	Position Elected / Excluded	Elected / Excluded at Count
A				
	LEE Peter	EXCLUDED	2	4
	GURNEY Rod	EXCLUDED	1	3
	UNGROUPED CANDIDATES			
	GOODSELL Deanna	ELECTED	2*	5
	HUNTER Col		**	
	GOODWIN Darryl	ELECTED	1	1
	PEVERIL-GUEST Greg	EXCLUDED	3	5

* Candidates elected at final count without reaching quota.

** The distribution of the total votes of Candidates would not change the elected candidate(s), therefore their exclusion did not proceed.

REFERENCES

http://www.elections.nsw.gov.au/councils/profiles/2017/lithgow_city

Australian Bureau of Statistics '2016 Census QuickStats'; Australia, New South Wales, Local Government Areas, Lithgow City Council.